

*essential*

THE UK'S NUMBER 1 JANUARY 2015 £4.25

# KITCHEN

## BATHROOM BEDROOM

ESSENTIAL  
GUIDE  
BEDROOM  
WALLPAPER

*Fresh new looks*

Kitchen  
schemes  
**DESIGN &  
PLANNING**

*Real home*  
**PROJECTS  
& SHOPPING  
IDEAS**

HI-TECH HOME  
**TRENDS**  
2015 & BEYOND

PENDANT LIGHTING | WILLIAM YEOWARD | KITCHEN MOODBOARDS | LUXE BATHROOMS









CLIVE CHRISTIAN DRESSING ROOM

[clivechristianinteriors.com](http://clivechristianinteriors.com)







Riviera Valencia Kitchen



CHARLES  
YORKE

*Kitchens & Living Spaces*

— HANDCRAFTED IN ENGLAND —



01623 756 080  
[www.charlesyorke.com](http://www.charlesyorke.com)







## *Autumn Additions*

new **ranges** | new **colours** | new **accessories**

for our new brochure, visit our website [www.masterclasskitchens.co.uk](http://www.masterclasskitchens.co.uk)





# MASTERCLASS KITCHENS

## PREMIER SHOWROOMS

Abingdon	01235 554773	Jersey	01534 865750
Basingstoke	01256 810460	Lichfield	01543 440020
Cambridge	01223 466634	Loughton	0208 5081941
Carmarthen	01267 220900	Meopham	01474 812114
Cheshunt	01992 643006	Nefyn	01758 721081
Chelmsford	01245 392792	Seaton	01297 22559
Dyffryn Ardudwy	01341 242015	Sherborne	01935 817111
Eastbourne	01323 642075	St Asaph	01745 582786
Fleetwood	01253 283786	Stratford-Upon-Avon	01789 488899
Gloucester	01452 310451	Swanage	01929 422345
Godalming	01483 424466	Tring	01442 827997
Great Barr	01213 573388	Uttoxeter	01889 565151
Guernsey	01481 242846	Wadebridge	01208 813231
Haverfordwest	01437 763623	Weymouth	01305 767711
Hazlemere (Bucks)	01494 718585	Winchester	01962 867540
Hereford	01432 279738	Wokingham	0118 9783393
Horley	01293 786116	Wolverhampton	01902 874200
Ingatestone (Brentwood)	01277 350800	York	01904 479792
Ipswich	01473 806461		



GREAT BRITISH KITCHENS





# TOM HOWLEY

EXQUISITE BESPOKE KITCHENS

**TOMHOWLEY.CO.UK/KESKB** CALL: 0161 848 1200 FOR A BROCHURE. QUOTE CODE K-ESKB23

FREE DESIGN SERVICE

AVAILABLE NATIONWIDE

BRITISH CRAFTSMANSHIP

UNRIVALLED QUALITY

LONDON  
020 7499 5145

ALTRINCHAM  
0161 929 5392

ALDERLEY EDGE  
01625 599 636

**NEW** BRISTOL  
01179 730 981

BRENTWOOD  
01277 214 587

BEACONSFIELD  
01494 673 443

ESHER  
01372 462 378

A MEMBER OF THE NEVILLE JOHNSON GROUP



# Welcome

## to the January issue

The hustle and bustle of the holiday season always pulls focus on your home - and if you're anything like me this means you'll now be writing lists! From little kitchen and bathroom shopping projects ('how do I not have a decent set of knives, and where have all my good glasses gone?') to bigger design ideas for the whole house (that guest bedroom, kitchen extension, kitchen pantry idea...) there's suddenly so much to think about. In fact, as the festivities wind down you'll usually find me tearing out interiors articles, making notes for new places to shop and poring over Instagram for lust-worthy houses that I bookmark for future reference. So what to do with all of the fresh ideas gathering momentum in my head? One way to start is with a moodboard, and I began mine in this issue of **EKBB**; see page 70 for our **In the Mood** feature which might inspire you to do something similar.



A new year hinges just as much on going back and collating past ideas as it does on looking forward to new concepts and trends, and we feel we've had a little glimpse of what a future kitchen might look like in Andrew Hayes' decadent design of the Fourth Wall concept kitchen for Poggenpohl in **Drama Scene** (page 40). Meanwhile, staff writer Lucy Macdonald has compiled a fascinating round-up of the tech innovations that are hitting your home now. See **Future Trends** on page 82.

New kitchen inspiration almost always comes from homeowners and designers, and this issue has so many stand-out projects with which to fall in love. **Pure and Simple** (page 22) epitomises small spaces and stylish family living, while another cleverly configured city family house which maximises space and light is featured in **No Place like Home** (page 30). I also loved the elegant bathroom scheme by designer Thomas Griem in **Hidden Haven** (page 94).

Here's wishing you all a most wonderful festive season.

Happy New Year!

*Ciara*  
Ciara Elliott  
ACTING EDITOR



### Contributors this issue



#### Susan Springate

Susan, a writer and mum, has interviewed everyone from Giorgio Armani to Oscar de la Renta. A regular contributor to **EKBB**, for this issue she speaks to much lauded designer William Yeoward, about his new range of home furnishings. See p.130.



#### Luc Roymans

Photographer Luc loves interiors, architecture and nature. In his free time he still takes pictures, but without the lens: observing and imagining images is his favourite waste of time. He shot the bright and airy kitchen project on p.22.



#### Nick Smith

Nick discovered his passion for photography in the dark room at college. He now shoots for interior designers and magazines, and shot the Georgian property on p.30. He lives in South West London with his wife and young son, Toby.

# THE DRAWER THAT LOVES DOING THE DISHES

## DESIGNED TO TURN A CHORE INTO A PLEASURE

We live life out of drawers and as every good cook knows a tidy kitchen is a happy kitchen. If kitchens are being redesigned around drawers, it makes sense that dishwashers are as well. That's why we invented a drawer right by your side that loves doing the dishes, making cleaning up as enjoyable as cooking itself. All DishDrawers™ come with a 5 year parts and labour warranty.\*

Live life. We'll take care of the details.

**Fisher & Paykel**

[fisherpaykel.com/uk](http://fisherpaykel.com/uk)



\*T&Cs apply. Visit [fisherpaykel.com](http://fisherpaykel.com) for more information





# Contents

EKBB JANUARY 2015 ISSUE 225



## essential kitchens

- 17 KITCHEN NEWS  
Exciting new products, showroom launches and key diary dates
- 22 PURE AND SIMPLE  
This traditional three-storey townhouse in Belgium is given a modern touch with a new, functional design for living
- 30 NO PLACE LIKE HOME  
The kitchen in this elegant Georgian property embraces a contemporary makeover, complete with AGA
- 40 DRAMA SCENE  
An island takes centre stage in this dramatic new kitchen concept which brings technology to the forefront
- 53 ESSENTIAL STYLE  
Use rustic tableware and soft pastel shades to brighten up your home
- 58 WINTER WARMERS  
Adorn your home this season with chic tableware and accessories for entertaining guests over the New Year
- 64 MIXING IT UP  
Contrast wood with smooth lacquer to create a diverse kitchen scheme
- 66 HANGING HIGH  
Accentuate your dining room with this range of gorgeous pendant lighting
- 70 IN THE MOOD  
Gather colour, design and accessories inspiration for your dream kitchen with these three different moodboards



### on the cover

Shaker furniture combines with handleless cabinetry in this kitchen by Chamber Furniture. See page 30.

PICTURE NICK SMITH

■ cover stories

## essential technology

- 78 TECHNOLOGY NEWS  
Let us inspire your shopping choices with the newest home appliances
- 82 FUTURE TRENDS  
The next generation of technology is here, and we show you the very latest innovations for you to try

## essential bathrooms

- 91 BATHROOM NEWS  
Our round-up of the latest bathroom brassware, furniture and tile collections
- 94 HIDDEN HAVEN  
Step inside this beautifully designed bathroom with a marble splashback, wooden furniture and retro-style tiles
- 100 SCARLET STYLING  
Introduce a splash of colour with bold red details mixed into a neutral scheme
- 102 FEEL THE HEAT  
Keep your bathroom warm during the winter with our selection of radiators

## essential bedrooms

- 108 BEDROOM NEWS  
Our round-up of bedroom storage, cosy cushions, throws and fabric designs
- 110 PRINTS CHARMING  
Personalise your sleeping space with a unique wallpaper, from heritage prints to subtle textures and ombré effects
- 116 RESTORED CHARM  
Create a snug winter scheme by pairing metallics and fluffy textiles
- 118 BY MY SIDE  
Take a look at our selection of unique wooden, glass and metal bedside tables

## essential interviews

- 68 FENELLA SMITH  
Designer Fenella talks all about her adorable animal print tableware and the new ceramics range coming out in 2015
- 80 TOM HUNT  
This 'eco chef' tells us why his travels have inspired his recipes, and how he adapts his food to fit the seasons
- 130 WILLIAM YEOWARD  
Internationally renowned homeware designer William Yeoward shares his vast knowledge of entertaining

## essential regulars

- 120 COMPETITION
- 121 SUBSCRIPTIONS
- 122 STOCKISTS



**EDITOR**  
Charlotte Coward-Williams  
**ACTING EDITOR**  
Ciara Elliott  
**ASSISTANT EDITOR**  
Emma Foale  
**STAFF WRITER**  
Lucy Macdonald  
**SENIOR EDITORIAL ASSISTANT**  
Kirsten Jones  
**DESIGNER**  
Teresa Walker  
**PRODUCTION MANAGER**  
Reg French

**CONTRIBUTORS THIS ISSUE**  
Brent Darby, Laura Edwards,  
Hayley Gilbert, Philip Karlberg,  
Gavin Kingcome, Anna Morley,  
Jacky Parker, Luc Roymans,  
George Sharman, Susan Springate,  
Hayley Steed, Nick Smith, Amelia  
Thorpe, Crista Van Dael, Philip  
Vile, Mary Wadsworth

**ADVERTISING MANAGER**  
Lenka Kourkoumpa  
**SENIOR SALES EXECUTIVE**  
Dean Buckingham  
**NEW BUSINESS**  
Inayah Cooksley  
**CLASSIFIED SALES**  
Victoria Jennings  
**MANAGING DIRECTOR**  
Luke Patten  
**COMMERCIAL DIRECTOR**  
Darren Summerfield  
**FINANCIAL CONTROLLER**  
Lesley Shard  
**SUBSCRIPTIONS** Tel: 01778 392471

**BurdaInternational**

The Tower, Phoenix Square,  
Colchester, Essex CO4 9HU  
www.hubertburdamediauk.com  
Tel: 01206 851117 Fax: 01206 849079

### INTERNATIONAL ADVERTISING ENQUIRIES

**Burda International**  
Italy Mariolina Siclari  
Tel: +39 02 91 32 34 66  
mariolina.siclari@burda.com

**Burda Community Network**  
**GERMANY** Vanessa Noetzel  
Tel: +49 89 9250 3532  
vanessa.noetzel@burda.com  
Michael Neuwirth  
Tel: +49 89 9250 3629  
michael.neuwirth@burda.com  
**AUSTRIA/SWITZERLAND** Goran Vukota  
Tel: +41 44 810 21 46  
goran.vukota@burda.com  
**FRANCE/LUXEMBOURG** Marion Badolle-Feick  
Tel: +33 1 72 71 25 24  
marion.badolle-feick@burda.com  
**UK/IRELAND** Jeannine Soeldner  
Tel: +44 20 3440 5832  
jeannine.soeldner@burda.com  
**USA/CANADA/MEXICO** Salvatore Zammuto  
Tel: +1 212 884 48 24  
salvatore.zammuto@burda.com

Reproduction Essential Repro | Printing Wyndeham Herons | Distribution Marketforce Tel: (020) 3148 3300.

Reproduction in whole or in part without written permission is prohibited. All rights reserved. Dates, information and prices quoted are believed to be correct at time of going to press but are subject to change and no responsibility is accepted for any errors or omissions. Neither the editor nor publisher accept responsibility for any material submitted, whether photographic or otherwise. While we endeavour to ensure that firms and organisations mentioned are reputable, the editor can give no guarantee that they will fulfil their obligations under all circumstances. © Hubert Burda Media UK 2015







*Your bath,  
your colour,  
your canvas*

Lime Green 734

Whether you want to tap into the latest colour trends or create a bespoke print, our cast iron baths are hand finished, primed and ready for you to paint whatever colour you like. So unleash your inner stylist and make an individual statement by combining our beautiful range of bathroom products, together with your own sense of style.

To see all of our stunning products and create your perfect bathroom visit [www.heritagebathrooms.com/hb14](http://www.heritagebathrooms.com/hb14)

**HERITAGE<sup>®</sup>**  
BATHROOMS

Imagine a worktop without restrictions, without limits.  
Dekton has been created without limits, it has an unlimited resistance, an unlimited design.  
You can use it for interior kitchens and even for exterior kitchens or terraces.  
With Dekton you can do everything you want, there are no limits.



KERANIUM TECH Collection

## WHAT IS DEKTON® UNLIMITED ?

Dekton Unlimited is a sophisticated mix of raw materials including glass, last generation ceramic tiles and quartz surfaces.

## WHAT MAKES IT SO UNLIMITED?

- Suitable For Exterior Application (Uv Resistant)
- Large Format Slabs - XXL
- Maximum Resistance to Scratch And Stains
- Maximum Resistance to Fire And Heat
- Low Water Absorption



A product designed by **COSENTINO**

[WWW.DEKTON.COM](http://WWW.DEKTON.COM)



# Kitchens

READY TO ROLL  
*Entertain with ease using  
a modern industrial  
trolley, topped with chic  
Scandi accessories*

Geometry tea towels, £4.50 each;  
Black potholders, £16 for a set of two;  
Grey jug, £48.50; Cutting board,  
£44.50; Salt jar, £17; Pernilla  
tins, £4 each; Rolling table,  
£474; Define golden lacquered  
stool, £148, all House Doctor

BRIGHT FAMILY HOMES • NEW DESIGN CONCEPTS • LATEST NEWS

# A perfect fit, whatever you're looking for.

At John Lewis you'll find the perfect fitted kitchen to suit your budget.

We have a wide range of styles and appliances to choose from plus an expert fitting service.

**Interest Free Credit** also available when you spend over **£1,000** on fitted kitchens and other selected products.\*



Never Knowingly Undersold  
on quality | on price | on service

John Lewis  
150 years

\*Interest free credit is available on indoor and outdoor furniture, floor coverings, fitted bedrooms, fitted bathrooms and fitted kitchens including large home appliances which are being fitted in your new kitchen. Excludes Nursery furniture. Subject to status, terms and conditions apply. 0% APR representative. Acceptance subject to status. Authorised and regulated by the Financial Conduct Authority. Visit [johnlewis.com/interestfreecredit](http://johnlewis.com/interestfreecredit) for more details. Our commitment to value means that we match the prices of high street competitors (this excludes online-only or mail order businesses). Service conditions must be comparable. See our 'Never Knowingly Undersold' leaflet in our shops or online for details.



# Kitchen News

*The latest launches and inspiration-packed events*

WRITTEN BY EMMA FOALE



One of the defining features of the new Forest kitchen, part of the Emotions collection from Porcelanosa, is its folding door fronts. These allow you to easily close off and conceal a part of your kitchen. You can choose from the Blanco Brillo or Roble Noche cabinetry finishes for a seamless look which allow you to divide and define different spaces within an open-plan room. The Forest kitchen (not including appliances or worktop or tables and chairs) is from £37,894. [porcelanosa.com](http://porcelanosa.com).



## WONDER WALL

Mosaic tiles look just as good on walls as they do on floors. Proving this, we think the Casbah porcelain tiles from The Stone & Ceramic Warehouse make an ideal feature wall. With bold geometric patterns and engraved floral designs in contrasting monochrome colours they fit well in contemporary kitchens and complement wooden furniture. The porcelain tiles are available in a variety of sizes, from £120 per sq. m. [stoneandceramicwarehouse.co.uk](http://stoneandceramicwarehouse.co.uk).



## Touch of glass

For an array of beautiful silverware, stoneware, marble and decorative glass, take a look at online homewares brand Lizard Orchid. We really love these mouth-blown glass vases and bowls. The hand-cut surfaces create graphic and geometric shapes, making each piece interesting to look at from all angles. From £25 for the Olivine glass bowl (shown front centre). [lizardorchid.com](http://lizardorchid.com).

## BE SEATED

Not only good-looking but sensitive to the environment too, the Fibre chair has been consciously designed by Iskos-Berlin for Muuto. It's made using recyclable plastic and wood fibers which create a comfortable and embracing seat with back and armrests. Available in a choice of colours and upholstery options, they're £229 each. [muuto.com](http://muuto.com).





## EASY LIVING

Mila is a kitchen that's minimalist in both look and feel with lines highlighted by grip access in the 22mm thick door panels. An interesting, textural effect is created with surfaces made from cement melamine and larch wood. It was designed by G. V. Plazogna for Cesar Kitchens and costs from around £540 for one base unit with two jumbo drawers (H78xW90xD57cm). [espressodesign.co.uk](http://espressodesign.co.uk).

As part of the new Innovo collection, a range of taps has been designed for Italian brand Cea by Natalino Malasorti. The mixer opens from cold water to hot to ensure energy saving and the swivel spout can be rotated to reduce water flow to just two litres per minute. The deck-mounted basin in satin finish (*shown*), is £567. [laurencepidgeon.com](http://laurencepidgeon.com).



WAYS WITH WATER

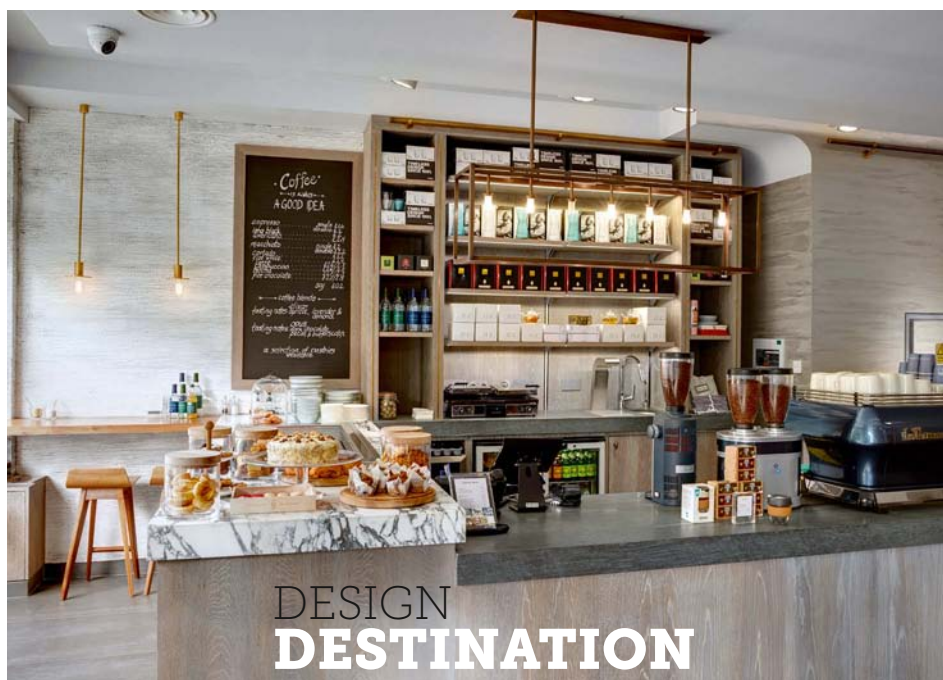
## Beautiful brass

Attracting your eye to these tables is a cast iron frame and antique brass finish legs with contrasting black tops. This stylish and versatile set, including a coffee table and two side tables, is exclusive to John Lewis and is £599. [contentbyconran.com](http://contentbyconran.com).



## MODERN TWIST

Shaker-style cabinetry is no longer a look that only fits in a very traditional-style home. In fact, it comes packed with modern appeal when it's handmade and painted like the Real Shaker kitchen by deVOL. The Pantry Blue colour against white Silestone worktops creates a contemporary contrast and makes a refreshing change to wood grain finishes. Kitchen prices start from £8,000. [devolkitchens.co.uk](http://devolkitchens.co.uk).



## DESIGN DESTINATION

Absolute Abode is a brand new design concept store, café and architectural interior design practice which has recently opened its flagship in Raynes Park, South West London. Founder Kirsty McMorron and an in-house team of experienced designers offer a 360° design service. While you're deciding on your interior scheme, you can also enjoy the delights of the café which offers delicious food created by Australian head chef Reagan Ellenbroek. [absoluteabode.com](http://absoluteabode.com).





To truly appreciate our  
furniture and service,  
please visit our showroom.

The Old Timber Yard  
London Road  
Halstead, Kent  
TN14 7DZ

t. 01959 532553  
w. [chamberfurniture.co.uk](http://chamberfurniture.co.uk)

Open:  
Mon-Fri: 09.00-17.30  
Sat: 09.00-14.00



CHAMBER FURNITURE  
Kitchens, Bedrooms & Studies

The Old Timber Yard, London Road  
Halstead, Kent, TN14 7DZ  
t. 01959 532553 w. [chamberfurniture.co.uk](http://chamberfurniture.co.uk)

## DIARY DATES

### **Winter Decorative Antiques & Textiles fair**

This thrice-yearly specialist event is celebrating its 30th anniversary and it will be welcoming visitors with an Alpine retreat theme for its foyer. Folk art and country accessories have proven popular in the past, and this year there will be French and Swedish painted antiques, decorative period rugs and even antique skis revitalised as lamps. [decorativefair.com](http://decorativefair.com).

**WHEN?** 20th – 25th January

**WHERE?** Battersea Park, London, SW11 4NJ



### **Brussels Art Fair BRAFA 2015**

Celebrating its 60th anniversary and a record breaking year of reaching more than 55,000 visitors in 2014, the BRAFA Brussels Art Fair is the place to be. There'll be 126 exhibitors from more than a dozen countries displaying their finest pieces. A wonderful mix of tribal art, paintings, drawings, furniture and objets d'art, to name but a few, will be on show. [brafa.be](http://brafa.be).

**WHEN?** 24th January – 1st February

**WHERE?** Brussels



PHOTO Event Attitude, A. de Villenfagne

### **Wood WORKS**

A high gloss finish gives this Scrapwood chair by Piet Hein Eek its defining character. It is crafted in the studio using traditional woodworking techniques and embraces a scrapwood look that's unique to each chair with interesting and differing wood and colours.

It's £380. [scp.co.uk](http://scp.co.uk)



### **Set in CONCRETE**

New from Leicht German kitchens, the tactile Tocco design features fine concrete which has been applied to lacquered MDF, creating a true-look surface with durability. It's available in three colour blends including Manhattan (light), Brasilia (dark) and Le Havre (rust coloured). Kitchens start from £15,000. [leicht.com/en](http://leicht.com/en).



### *Rekindle the flame*

A marble-lous addition to any tabletop, we love these sophisticated candleholders from Ferm Living. Each one has beautiful veining running through it for added interest and they're available in three different colours including red, black and green. Prices start from £15. [fermliving.com](http://fermliving.com).



### **SET THE SCENE**

If you're dining in, create an intimate atmosphere by hanging a couple of Levels lamps from Hem above your dining table. By Swedish design team Form Us With Love, the rounded shades are made from spun metal. Prices start from £173 for the small size (shown with the Alle Table by Staffan Holm, £630). [hem.com/en](http://hem.com/en).







FOOD IS ART. PRESERVE IT.



In craftsmanship and  
performance,  
Sub-Zero is without  
rival. Its advanced  
technology keeps food  
fresher longer.

**SUB-ZERO**

[www.subzero-wolf.co.uk](http://www.subzero-wolf.co.uk)

251 Brompton Road, Knightsbridge, London SW3 2EP 0845 250 0010



# • PURE AND *Simple*

Cleverly designed with ample storage space, this stylish Belgian home perfectly suits busy family life

PICTURES **LUC ROYMANS** | STYLING **CRISTA VAN DAEL** | WORDS **JACKY PARKER**





**WHITE WASH**

The resin floor and painted walls enhance the feeling of light and space. Softening the clean lines and with an easy-on-the-eye shape, the curvaceous Panton S chairs surround a wooden table



# W

hen Kris and Sarah De Roo decided to move to a larger home in Ghent, Belgium, with their son Edgar, eight, and daughter, Julia, six, they knew what they were looking for. 'We wanted to stay in the city as Ghent is very child-friendly,' says Kris. 'We were also keen on a traditional townhouse as they have high ceilings and large rooms with straight lines and no unnecessary corners.'

The tall, thin three-storey townhouses were popular with the upper-middle classes in the 1920s and '30s and have a clean modernist look about them. With such a specific checklist, the couple were expecting it might take some time to find the right place, but were overjoyed when they fell for the first house they saw. 'We loved it,' smiles Kris. 'It needed some work as it had been rented to students for a few years but otherwise it was in great shape. It was also close to the train station and city centre, which was important.'

Keen to modernise the property, which still had the original plumbing and electrics from the 1920s, the couple, a lawyer and a social worker, decided to get some creative input from their architect friend, Koen Baeyens. Koen is co-founder of Graux & Baeyens Architects, which is a local practice.

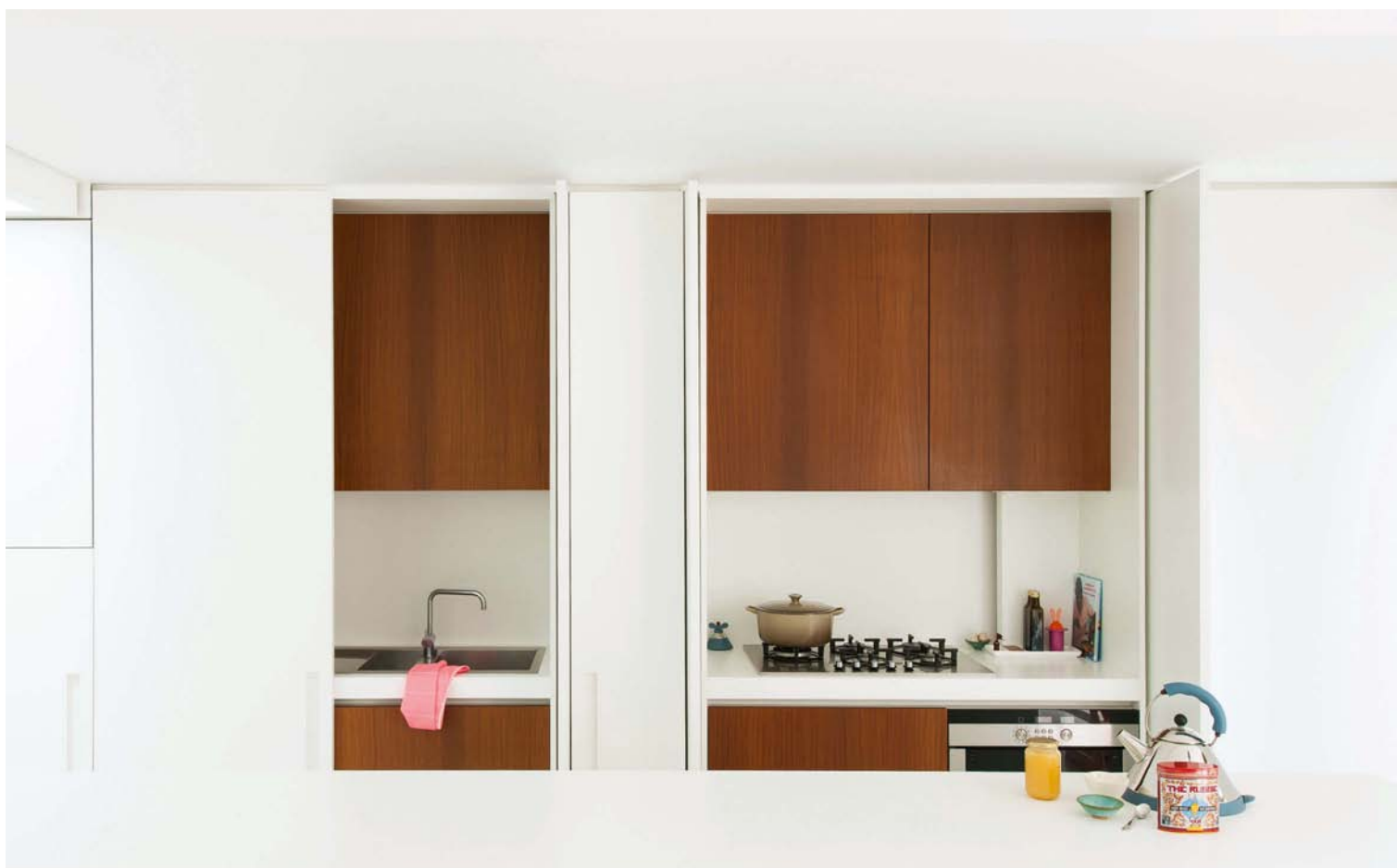
'We hadn't actually seen any of their work as we knew Koen socially, but we discussed a few ideas with him and Basile, his business partner and had a good feeling about them,' Kris explains. Giving Graux & Baeyens Architecten an idea of their budget and a loose brief for a simple space with plenty of storage, the practice otherwise had creative freedom to do as they thought best. Kris and Sarah both loved the ideas that Koen and Basile suggested and the entire project took only nine months. 'We really connected and they captured our wishes immediately,' reflects Kris. **CKBB**



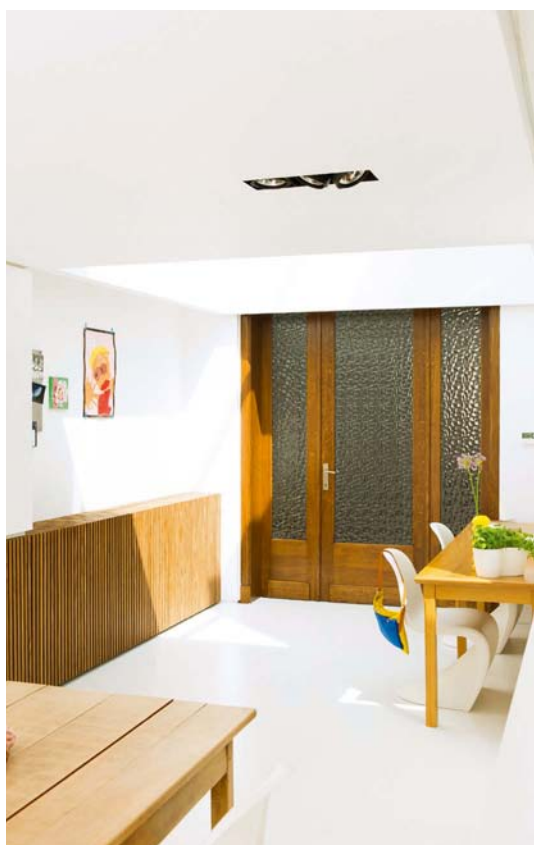
## STORAGE SOLUTIONS

The generous, slatted timber cupboards provide ample storage and complement the original panelled glass doors to the sitting room. The rich wood tones add warmth to the simple, white space





*‘We put the working area to the side so that it can be closed off with sliding doors, and the centre of the room can be used as a family room’*



**BASILE GRAUX  
& KOEN BAEYENS**  
GRAUX & BAEYENS  
ARCHITECTS



**Q&a**

**What was the initial brief from the homeowners?**

The owners wanted their new kitchen to be a functional living space that connected the house to the garden, and with plenty of storage. The house was in good condition except for the kitchen extension at the back which was not just unattractive and out of date but badly configured.

**Were there design challenges?**

Due to the fact that the house is not very wide we had to make the island narrower and longer than is typical.

**How did you create the layout?**

Belgian townhouses typically have three rooms on the ground floor, so we rebuilt the space to resemble the original design. However, we put the working area in the kitchen to the side so that it can be closed off with sliding doors. The centre of the room can now be used as a family room for eating, homework or entertaining.

**Can you tell us about the style of the cabinetry?**

Some cabinets hide the radiators and others provide storage. The cabinet covers and doors are made with slatted timber on black MDF, while the radiator covers have openings so the heat can escape. The radiators beneath are black so the effect is the same.

**And the materials and finishes?**

We chose white for the scheme as it catches the light and contrasts with the original parts of the house. The white polyurethane floor continues from the kitchen along to the hallway and front door and out to the patio at the back to connect the extension with the house and garden.

**How much storage has been incorporated?**

Storage was the owner's main aim, so there are cabinets along the wall next to the radiators, the kitchen island and floor and wall cupboards for storage.



### TOY STORY

There is plenty of space for children's toys as well as crockery and kitchen utensils

### SLIDING DOORS

Partition doors to the side of the sink and cooking appliances can be closed to hide away any mess when the family has visitors

## ***Kitchen profile***

A three-storey Belgian townhouse has been remodeled, replacing a tired 1980s kitchen extension to the rear with a contemporary, multi-functional space. It doubles up as both a kitchen and light-filled family room that also connects the house with the garden.

### **GRAUX & BAEYENS ARCHITECTS**

Désiré Fiévéstraat 34,  
B-9000 Gent, Belgium  
Tel 00 32 9 330 3493.  
[graux-baeyens.be](http://graux-baeyens.be)





**STAY  
AND PLAY**

The family spends most of their time here, as both Kris and Sarah love to cook. There is also an area where the children can do their homework



*'As this house is not very wide we had to make the island narrower and longer than is typical'*



## Stockists

### APPLIANCES AND FIXTURES

**Oven**, for similar, try Siemens at John Lewis.

**Hob**, for similar, try Siemens at John Lewis.

**Tapware**, Vola. **Panton S chairs**, Aram

Store. **Wooden dining table**, for similar,

try Out and Out Original. **White resin**

**floor**, for similar try Puur Floors.

FOR STOCKISTS, SEE PAGE 122



## INSIDE OUT

The architects have achieved a lovely multi-functional space. As the kitchen is not too prominent, the family can all hang out here and entertain, enjoying the garden at the same time





## AT HOME...

We love the combination of our new Eva headboard, Alice valance and Chichester wardrobe painted in lead light  
Create your own design ideas at [neptune.com](https://www.neptune.com)

*N*  
NEPTUNE



## MAKING CHANGES

The original kitchen was designed over two levels so it felt small and was difficult to work in. As part of the new design, the kitchen was elevated onto a single level to make socialising a lot easier and the children can now sit nearby while Caroline is cooking





# NO PLACE LIKE *home*

This Georgian house has given Caroline and Ben the perfect space for a kitchen with an extension and all-round generous views

PICTURES NICK SMITH | WORDS EMMA FOALE

When it comes to choosing a new home it isn't always recommended to 'judge a book by its cover', however it was the elegant exterior of this particular Georgian property which initially drew owners Caroline and Ben Walker towards it. With four children and a Cocker Spaniel in tow, they were looking for a spacious abode in the right location, and this elegant seven bedroom house in South East London, which has views over Blackheath, ticked all the boxes for them.

The upkeep of the house had not been the top priority of the previous owners, so while the structure was sound, 'there was a lot of internal work that needed to be done', says Caroline. Taking their time to decide what they wanted to do with the kitchen they 'worked from the top of the house down, knowing that it would need to be done eventually but wanting to see how we lived in the house first.'

Managing Director of Chamber Furniture, Scott Nicholson had been recommended to Ben and Caroline through friends. 'We didn't want an old country-style kitchen', says Caroline, 'but nor did we want a very uber modern design. We liked the idea of contemporary clean lines but I had also fallen in love with the old AGA that had been in the original kitchen and I had already persuaded my husband that we could buy a new one. So any kitchen design had to include 'my' AGA.' Scott suggested handleless stained oak cabinetry which flowed better with the traditional parts of the house and worked with the height and depth of the room to incorporate plenty of storage for the family.

Talking contentedly about the new kitchen, Caroline smiles, 'I honestly love everything about it. There is so much space but it still feels warm and cosy, and it's a great place to sit and work but also to cook and chat. It can be all things to most situations, but happily hasn't replaced any of the rest of the house. It just works for us.' **EKBB**







## HOTTING UP

In front of the statement antique mirror splashback from Stainger Glass is the 3-oven cast iron AGA in Pewter. Caroline loved the original one that was left from the old kitchen, however it was from pre-1974, had only two ovens and was expensive to run, so she persuaded husband Ben to get a new one. They also chose an AGA electric hob to allow them to turn the main AGA ovens off during the summer months





## SENSE OF SPACE

Caroline and Ben wanted to be able to enjoy both sides of the house, so lots of light floods in through glass doors and windows. The handleless stained oak cabinetry has a warm look which creates a flow from one side of the kitchen all the way to the other. There's now an abundance of storage space around the AGA, as well as a line of cupboards on the opposite side of the room too







*‘We didn’t want an old country-style kitchen, nor did we want a very uber modern design, but we liked the idea of clean lines’*



**SCOTT NICHOLSON**  
MANAGING DIRECTOR,  
CHAMBER FURNITURE

**What was the initial brief from the homeowners?**

Caroline and Ben wanted to combine two styles of furniture – traditional with contemporary twists throughout – to complement the architecture, while also keeping the same furniture finishes.

**What challenges, if any, did you come across?**

The original kitchen floor level was one metre lower. So you couldn’t see the amazing views over Blackheath towards the front of the house. Our challenge was to create an open and light space that allowed Caroline to enjoy the view on both sides.

**How did you create the layout?** We ended up adding

the one metre height difference to the external steps. The opening between the kitchen and extension was created to sit flush with the cabinets for a seamless look. One wall was 750mm deep and the other 450mm. This achieved perfect sight lines and enabled the island to increase in size, providing more space for storage, preparation and seating at one end.

**How did the architecture of the old building influence your design?**

The house is a beautiful Georgian building, built around 1826, with a contemporary glass extension. The aim was to maintain its traditional beauty and create a classic and timeless space for family living.









## *Kitchen profile*

This sizable kitchen combines traditional Shaker furniture with contemporary handleless 'shadow gap' cabinetry. Generously high ceilings allow for a raised level which creates a dining area, while the height and depth of the room also allows for plenty of storage space and a traditional 3-oven AGA.

### CHAMBER FURNITURE

The Old Timber Yard, London Road,  
Halstead, Kent, TN14 7DZ.

Tel 01959 532553. [chamberfurniture.co.uk](http://chamberfurniture.co.uk)

Kitchen prices start from £40,000.



### DIVIDED ATTENTION

Considering the layout, Caroline says, 'I knew how I worked, and with the children and the dog, the island creates a useful barrier for me between them and the hot pans or boiling water. It doesn't feel like a barrier in a negative way, it just creates a natural divide'



## LIGHT & OPEN

A comfortable space for entertaining is created with wide glass doors and a low-backed corner sofa. Caroline enjoys hosting family parties and lunches with friends. She explains, 'I'm not a great gourmet chef, but I do really like having a space that works for all kinds of occasions'

## Stockists

### APPLIANCES

3-oven gas **AGA** in Pewter with integrated module, £10,845, AGA.

### FIXTURES AND FURNISHINGS

Modultop **sinks**, from around £250 each, Kohler. Fusion boiling water tap, from around £900, Quooker. Compac® 60mm Perlino quartz **worktops**, prices on request, The Worktop Centre. Antique mirror **splashback**, prices on request, Stainger Glass. Jackson pendant **lighting** in matt grey (above island), £59, Made.com. Similar pendant **lighting** (above dining table), PR Home City hanging lamp, £75, Occa-Home. Adam solid oak dining **table**, £730; Albany **chairs**, £195 each, all Wood Empire. Similar bar **stools**, try Alexander & Pearl. **Pouffe**, from eBay and upholstered in owner's own material. Similar **sofa**, 3.Sits Richmond modular sofa, from around £1,700, One Deko. Glass **doors**, prices on request, Fineline.

FOR STOCKISTS, SEE PAGE 122



espresso  
live cook sleep



Award winning interior solutions for kitchens, bedrooms and living spaces.

149 St John's Hill London SW11 1TQ  
[www.espressodesign.co.uk](http://www.espressodesign.co.uk)  
020 7078 9912

Cesar



## MATERIAL MIX

White Eucalyptus veneer wall panelling, (right), gleams by the light of the fire, creating subtle contrast with the white waxed solid oak dining table





# DRAMA *Scene*

Creative Director Andrew Hayes takes entertaining this festive season to a whole new level of glamour

PICTURES GEORGE SHARMAN AND PHILIP KARLBERG | WORDS AMELIA THORPE







Sitting drinking coffee in an East London café one morning, Poggenpohl Creative Director Andrew Hays began drawing on a paper napkin. These pencil sketches were to form the basis of a totally new kitchen concept,

The Fourth Wall, which has been received by the international design community with applause. 'We are in the middle of a food revolution, so I wanted to look at how we celebrate great food and fresh ingredients, and how we make the kitchen a warm and convivial place,' explains Andrew. 'I have seen so many kitchen designs focussed on clever engineering and on concealing each element, to the point where its function as a food and preparation space is not its primary focus. I wanted to get back to what makes a kitchen inviting and memorable.'

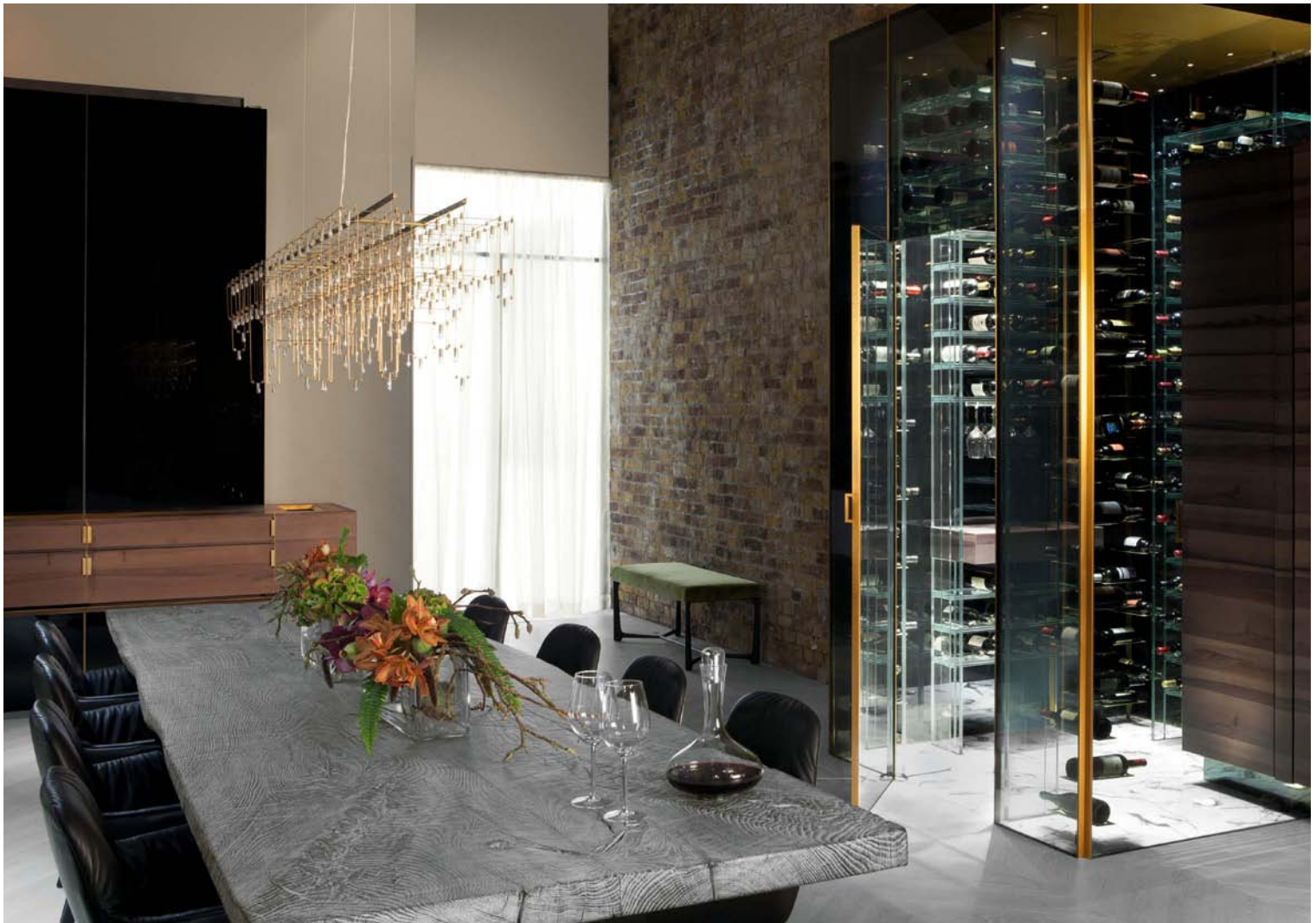
Using his background in production design for opera, theatre, TV and film, Andrew has created a dramatic concept that places the kitchen island at centre stage. There are six zones that surround the large island, including a butler's pantry, larder, wine store, pastry counter, preparation bench and dining

area. The Fourth Wall is named after the classic theatre convention that references an imagined boundary between the audience and actors, but here there are deliberately no dividing lines – the room is designed to perform perfectly as an attractive cooking, socialising and dining space.

'There are lots of exciting features in the design,' continues Andrew, pointing out the intelligent glass-walled larder as an example. 'I wanted to create a hide and reveal element. Here, the glass can be changed from solid black to completely transparent, depending on the mood you want to create, and all at the simple and easy flick of a switch.'

A beautiful, grey-toned mix of interesting textures also adds to the drama of the design. There's everything from bespoke tinted veneers and brushed metals to subtly textured porcelains and honed marbles. In the heart of the room, an open fire warms the space, while a bespoke brass light fitting twinkles above the dining table. 'It's an eclectic mix of elements,' says Andrew, 'but all are designed to make an emotional connection and to make you feel welcome, comfortable and at home.' **CKBB**





*'We are in the middle of a food revolution, so I wanted to look at how we celebrate great food and fresh ingredients, and how we make the kitchen a warm and convivial place'*

#### A FINE VINTAGE

**Above** Positioned close to the dining table, the humidity-controlled wine store features three separate zones, as well as a decanting shelf and humidor to store cigars

#### SURFACE MATTERS

**Left** The sink in the main kitchen is next to the glass-walled larder, the porcelain work surface appearing to run almost seamlessly from one zone to the next. The larder itself features cantilevered glass shelves which appear to float, plus brass vegetable boxes for an elegant finish



ANDREW HAYS  
CREATIVE DIRECTOR,  
POGGENPOHL



#### How did you develop your design from the early sketches?

From initial 'back of the napkin' ideas I carried on drawing and developing the concept. I then built models because I wanted to be sure that the larder related well to the cooking area, the dining table to the butler's pantry and so on. It was very important that the room functioned well for cooking and entertaining.

#### And how did you select the materials and finishes?

Many of them were chosen on

the back of practicality. So, for example, marble was used for the pastry counter because it is naturally cool, then finished it with a good, modern sealant so that it is stain resistant. We used hardwearing porcelain for the island worktop, because you can cut directly on it, and even put hot pans straight on to its surface. Then we picked colours that toned beautifully together - I was quite obsessive about this! I wanted a warm, grey veneer for the end of the island, but I just couldn't find anything quite right. In the end,

I got some offcuts of various different veneers and bleached them white before staining them grey - until I finally achieved the perfect tone.

#### And how did you choose the appliances?

The Electrolux Grand Cuisine collection is the first range of products designed to bring professional level cooking into the domestic kitchen. It is a collection that is innovative and very much leading the way, so it was a natural partnership for a new luxury kitchen concept like this.





*“I wanted to create a hide and reveal element, depending on the mood you want to create, and all at the easy flick of a switch”*





## TALL WALL

Wall-hung cabinets appear suspended in the space, and are designed to house top-of-the-range appliances, including the Grand Cuisine's blast chiller and combination oven with steam. Above the appliances, there is innovative sliding, side-opening storage for kitchen equipment.



## TOUCH-CONTROL

The automatic lighting system was designed especially for The Fourth Wall kitchen concept.



## Kitchen profile

At the heart of The Fourth Wall concept is the celebration of great food and fresh ingredients. Specially designed fixtures mean that everything – from fruit and vegetables to meat and fish – will be held in optimal conditions of temperature and humidity until ready for preparation. The latest cooking appliances are designed to bring chef-standard equipment into the domestic sphere, built into bespoke streamlined cabinetry in warm grey tones finished with linear brass detailing.

Visit Poggenpohl at 213C Newnham Terrace, Waterloo, London, SE1 7DR to see The Fourth Wall. Tel 020 7902 5245. [poggenpohl.com](http://poggenpohl.com) Kitchen prices from £30,000.



## GRAND DESIGN

The focus of the kitchen is a large island, over five metres in length, linked to a traditionally inspired larder, given a modern touch with integrated humidity and temperature settings









**ON THE BENCH**

The design of the preparation bench with its open-shelved pot storage takes its inspiration from grand country house kitchens of days gone by







## Stockists

### APPLIANCES

**Combination oven**, £17,988; **Blast chiller**, £12,360; **Precision vacuum sealer**, £7,080; **Induction zone**, £14,388; **Surround induction zone**, £7,080; **Sear hob**, £5,880; **Gas hob**, £8,280; **Stand mixer**, £1,560; **Bespoke ventilation system**, priced to order, all Electrolux Grand Cuisine.

### FIXTURES AND FURNISHINGS

Purist deck-mounted bridge **mixer** in matt black finish, from £781, Kohler. **Worktops and counters** in textured Grigio porcelain (island), Statuary **marble** (pastry counter), Fior di Bosco **marble** (in butler's pantry), Neo Marquina honed **marble** (fireplace plinth); Bespoke polished brass **light fitting** designed by Andrew Hays for Poggenpohl. Bespoke white oak chevron **parquet** and Statuary **marble flooring**; bespoke book-matched and waxed oak **dining table**; Bespoke black leather **dining chairs**; Bespoke **pot filler** (in butler's pantry), all priced to order, Poggenpohl. Mater High **Stools**, £523 each, Northern Icon. Stilt Coupe lounge **chair**, XY **Bench**, both price on application, Holly Hunt. **Painting** by Andrew Hewish.

FOR STOCKISTS, SEE PAGE 122

*‘Marble was used for the pastry counter because it is naturally cool, and then finished it with a good, modern sealant so that it is stain resistant’*

### STAY CONNECTED

The preparation bench features a technology drawer where phones and tablets can be charged, all hidden from view

### PRACTICAL PREP

With its cool white marble top, the pastry counter is a retro-inspired area for making pastry, bread or pasta





*Tradition and Innovation*

# OPPOSITES THAT ATTRACT



## **RICH CONTRASTS: SEEN IN THE HEART OF PARIS**

When black meets white, classic meets modern, and master craftsmanship meets advanced construction, the result is interior design that could not be more exciting.

Discover new design latitude for your kitchen, and, like the owners of this Parisian domicile, allow yourself to be inspired by your very own individual style.

*[www.siematic.co.uk](http://www.siematic.co.uk)*



# **Siematic**



# Style

LET IT SNOW  
*Deck your house  
for the holidays  
with twinkling  
fairy lights,  
candles and cosy  
tactile fabrics*

Ebbe Gehl Mira bench, £399;  
Soft white LED lights, £70;  
Whitewash swivel tree,  
£35, all John Lewis



KITCHEN STYLING IDEAS • ECLECTIC PENDANTS • FENELLA SMITH



Design +  
Kitchens +  
Living

# Roundhouse

West End 020 7297 6220  
Fulham 020 7736 7362  
Notting Hill 020 7229 2123  
Richmond 020 8744 9993  
Cheltenham 01242 521 900  
Guildford 01483 573 584

Made in Britain, Built to Last  
[www.roundhousedesign.com](http://www.roundhousedesign.com)







Cutout linen **tea towel** £12, Decorator's Notebook



Neu **pitchers** from £17; Cutting **board** £42.50; Splash cotton **napkin** £27.50 for a set of four; Neu **bowl** £42.50; Neu **platter** £25, all Ferm Living

*'Feast on a cool palette of glazed ceramics and use fresh sprigs and calm pastels to enliven New Year dining'*



Retro **mugs** £7.50 each, Rigby & Mac



Camellia etched dinner plate £84, Heath Ceramics



Oyoy Dotti cushions £39.99 each, Skandivis



Nordic milk jug £12.95, Rigby & Mac

Wooden bowling bowls £94.51 for a set of three, Hem



Lotta cheese dome £85, LSA International



FOR STOCKISTS, SEE PAGE 122





## Make a Statement. Surfaces for your home.

Comprised of 93% natural quartz - one of nature's strongest minerals, Caesarstone quartz surfaces offer the ultimate combination of form and function, allowing for a diverse, durable, and practical surfacing material with its stain, scratch, and non-porous properties.

[www.caesarstone.co.uk](http://www.caesarstone.co.uk)





Fancy **pendant**  
by Kathleen Hills  
£98, Bodie & Fou

Geometric patterned wool **rug**  
£150, Plantation Rug Company

*‘Experiment with texture and pattern, opting for detailed pottery and pretty pink geometric pieces’*

Walker **chairs** in Grey, Dusty Rose and Army Green £165 each, House Doctor



**Ella rose tumblers** £29  
for a box of six, Neptune



**Harley pouffe**  
£175, Loaf



**Kahler Urbania light house** £24.50,  
Story North

**Emma squared ceramic green tray** £18, Bloomingville



**Pottery fox** £138,  
Jonathan Adler

FOR STOCKISTS, SEE PAGE 122





**charnwood**

*Exceptional British made wood stoves*

01983 537780 [www.charnwood.com](http://www.charnwood.com)







The gradient **vase**  
in blue £180,  
Holly's House

*'Introduce pale flooring  
to brighten your space,  
along with some eclectic  
shapes and modern art  
to add graphic flair'*



Asymmetrical **candle  
holders** £18.50 each,  
Umbra Shift



Single Stave Blocks parquet  
**floor** made in solid oak and  
finished in rustic white oil,  
from £56 per sq. m, Junckers



**Dandy side table/stool**  
£1,250, Mint Shop



Seeing In Black  
& White linen  
cushion by  
Anna Jacobs  
£65, Quiirk



**Symons candle** £35,  
The White Company

**Nordal blossom fluff plate**  
in Aubergine £14, Amara



**Tree House illustration**  
£53, Kristina Dam

FOR STOCKISTS, SEE PAGE 122



# Winter WARMERS

Cosy up with a brand new cookbook and start planning a year of menus and parties

PICTURES BRENT DARBY | STYLING ANNA MORLEY | STYLING ASSISTANT KIRSTEN JONES

(Background to foreground) Marble round **chopping board**, £38, Holly's House. Nuno tapas **plate**, £24 for a set of two, Harriman & Co. Grey dipped **vase**, £38, Holly's House. Medium milk **jug**, £12, Harriman & Co. Pantry medium glass **jar**, £18, The White Company. Gold pairing **knife**, £59 for two, The Conran Shop. Wooden Conran **cake plate**, £35, Marks & Spencer. Dari marble small **board**, £22, Rowen & Wren





(From second shelf down) Latte **bowls**, £3.50 each, Anthropologie. Stoneware **teapot**, £45, The White Company. Bold spotted **mugs**, £8 each, Marks & Spencer. Wonki Ware Organic Sand **mugs**, £13.50 each, The Conran Shop. Georg Jensen Helena **coffee pot**, £120, John Lewis. (On worktop) Grey dipped **vase**, £38, Holly's House. Pantry glass **jar** large, £20; Medium **jar**, £18, both The White Company. Nuno tapas **plate**, £24 for a set of two, Harriman & Co. Wooden Conran **cake plate**, £35, Marks & Spencer. Ceramic **oil and vinegar set**, £40, Cox & Cox. **Jug**, £47.50, Holly's House. Light Grey organic ceramic **bowl**, £55, French Connection. (On table) Firer pleated clay **vase**, £200, The Conran Shop. Nuno tapas **plate**, £24 for a set of two, Harriman & Co. Dark wooden **mug**, £14, Rockett St George. Stoneware **bowl**, £16; Stoneware milk **jug**, £12; Bam Bam black **spoons**, £1.25 each; Castle **napkin** in Dove, £7.50 each, all Harriman & Co. Herringbone design **cutlery**, £4.99 for a set, Zara Home. Selection of books, see over. (On bench) Mohair fringed **blanket**, £109.99, Zara Home. Bessie lace trim **cushions** in Dove Grey and Ebony, £46 each, Rowen & Wren. Harlequin Cheree **cushion** £45, John Lewis. Similar Croft Collection tiny check stripe **cushion** in Stone, £20, John Lewis. Luxury Family **kitchen** range featuring cabinets painted in Tom Howley Tansy; Custom-made curved leather **bench** seating to match **table**; Sub-Zero built-under **wine cooler**, from around £5,000; Miele built-in Nespresso **coffee machine**, around £1,500. Kitchen range from, £35,000, Tom Howley





Bessie lace trim **cushion** in Dove Grey, £46, Rowen & Wren. Mohair fringed **blanket**, £110, Zara Home. Harlequin Cheree **cushion**, £45, John Lewis. Gold rimmed tea **cup and saucer**, £24, Anthropologie. Gold **spoon**, £22 for a cutlery set, Holly's House. Polpo Venetian **cookbook**, £25, Anthropologie. Marcus Wareing Nutmeg & Custard **cookbook**, £30; Anjum's Quick and Easy Indian **cookbook**, £18.99, both Waterstones





(Clockwise from left) Robert Welch Limbrey **salt and pepper mills**, £42 each, both John Lewis.

Lisa Firer large pleated clay **vase**, £200, The Conran Shop. **Jug** with handles, £47.50,

Holly's House. Medium gold aluminium spiritual **jar**, £70, Wesley-Barrell. Copenhagen **candlesticks**, £12 each; Wooden herb **block**,

£20, both Harriman & Co. Household **candles** in natural, £6.50 for a set of four, Cox & Cox.

Charleston canapé **bowl and picks**, £10, John Lewis. Marble effect melamine **plate**,

£14 for a set of three, Rockett St George. Dillie champagne **saucers**, £36 for a set of four,

Rowen & Wren. Herringbone design **knife**, £4.99 for a cutlery set, Zara Home. Gold

**spoon**, £22 for a cutlery set, Holly's House.

Ralph Lauren Home Montgomery three nut **bowl**, £150, Amara. Metallic nibbles **bowl** in brass, £4.95 Rockett St George





(On shelf) Georg Jensen Helena **coffee pot**, £120, John Lewis. Similar white Eva Solo **jug**, £50, Amara. Newgate Quad wall **clock**, £105, John Lewis. Mon-De rise and fall pendant **light**, £225, The Light Haus. (Background, left to right) Wooden Conran round **tray**, £39.50, Marks & Spencer. Dari marble **board** small, £22, Rowen & Wren. Seau Timbale **wine bucket**, £108, The Conran Shop. Conran marble **pestle & mortar** set, £45, Marks & Spencer. Fat ceramics water **jug**, £35, Rockett St George. Wooden Conran **cake plate**, £35, Marks & Spencer. (On worktop) Champagne **trug**, £150, The White Company. **Cutlery** in gold, £22 for a set of four, Holly's House. Forest walk side **plates**, £14 each, Anthropologie. Olivewood butter **knife**, £1.55, David Mellor. RCR Cristalleria da vinchi prato **flute**, £15, John Lewis. Wooden nesting **bowls**, £25 for a set of three, The White Company. Conran glass **cloche**, £25, Marks & Spencer. Marble round white chopping **board**, £38, Holly's House. Natural **napkin**, £6, David Mellor. Luxury Family **kitchen** range featuring Silestone Granite **worktops** in Yukon; **Cabinets** painted in Tom Howley Tansy; Perrin & Rowe Aquitaine filtration **tap** in polished nickel, around £600; Wolf **range cooker**, around £17,000. Kitchen range priced from £35,000, Tom Howley



(From left to right) Borel-Lucas Cuvee Art Divin **Champagne**, £48; Champagne **bottle stopper**, £15, both Champagneoccasions.eu. Stoneware **cake plate**, £35; Glitter scatter **stars**, £10, both The White Company. Marcel Wanders **martini glass**, £25 for a set of two, Marks & Spencer. Mixology clear **champagne coupe**, £125 for a set of four, Waterford. Gold ceramic star **candleholder**, £8, Rockett St George. Croft Collection gold etched **coupe glass**, £8; RCR Cristalleria da vinchi **prato flute**, £15; Similar Elina **champagne flute**, £33.99, all John Lewis. Mixology clear **champagne coupe**, as before. LSA Garbo thick blush gold bands **cocktail glass**, £38.75 for a set of two, Amara

*Shot on location at the Tom Howley showroom,  
3 Wigmore Street, London, W1U 1AD.  
tomhowley.co.uk*

---

FOR STOCKISTS, SEE PAGE 122

---





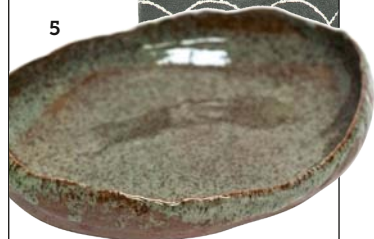
# Mixing IT UP

*Opt for a clean, handleless kitchen, enlivened by a bold brick feature wall and industrial elements. Try combining rich wood and lacquer accessories for a tactile cooking and dining space*

COMPILED BY KIRSTEN JONES

- 1 Thonet 233 **armchair**, £803, Nest
- 2 The Rodnik Band **rug**, £249, Made.com
- 3 LC94BA521B stainless steel box style chimney **hood**, around £350, Siemens
- 4 Saarinen round **table** by Knoll, from £1,560, Skandium
- 5 Oval serving **dish** in Celadon Grey, £25, Norm Living
- 6 Bi Kage 1/S **pendant** by Sotto Luce, £30.90, Made In Design
- 7 Abi long wooden paddle **board**, £18, Habitat
- 8 Norm salt and pepper **grinders**, £42, Story North
- 9 Password High **sideboard** in lacquered wood, £1,560, Calligaris
- 10 Kristalia Elephant **chair** on wooden base, £457, Nest

FOR STOCKISTS, SEE PAGE 122







#### DESIGN & COLOUR

Here, a Nolte kitchen displays the new Contour Lack door range, painted in White, Papyrus grey and Emerald soft matt colours to create a timeless modern appeal. Kitchens from the Nolte range are priced from £12,000, Nolte Küchen





## MAKE IT BLUE

This Bugsy industrial blue metal pendant light offers a striking factory finish to a contemporary space. It's £240 from Alexander & Pearl



# *Hanging high*

*Illuminate your dining area with our selection of eye-catching pendants*

COMPILED BY KIRSTEN JONES



- 1** Santorini blown, pressed glass garland light, from £189, Twentytwentyone **2** Wood and metal pendant, from £400, Hind Rabbii  
**3** Clover hand-blown glass pendant, from £2,220, Lasvit **4** Quay pendant in natural aluminium, £145, Original BTC **5** Bolshoi Theatre Moscow glass pendant from the Never Ending Glory collection, from £1,536, Lasvit **6** Steel antique industrial light by Industville, £119, The Mint List **7** Bellingham glass and brass pendant, £80, Jim Lawrence **8** Avedon metal and fabric suspension lamp, £1,460, Creative Mary **9** Large glass and brass pendant, £210, Nordic House

FOR STOCKISTS, SEE PAGE 122



PRODUCT DESIGNER PROFILE

# *Fenella* SMITH

Designer Fenella tells us about her cosy country lifestyle, and where her great love of animals began

FEATURE **EMMA FOALE** | PHOTO **MARY WADSWORTH**





**Can you describe your home to us?**

We live in a Georgian farmhouse in a very pretty village outside Henley-on-Thames. I'd say it's a combination of elegant and cosy. I have three wonderful stepchildren and two rescue dogs so it's a busy house filled with laughter, and generally with a pile of wellington boots on the doorstep. Phoebe my eldest stepdaughter is a great cook so the kitchen is often filled with delicious baked treats. The kitchen has an AGA and a huge armchair, which always has someone or a Labrador sat on it!

**Where does your love of animals come from?**

We had a wonderfully eclectic mix of pets at home when I was growing up and my mother's best friend was a farmer. Mum and Joan used to sit by the AGA nattering and I'd be given a bucket of feed

**Tell us about the inspiration behind your Dotty range.**

I love bright colours but with a sense of light and space. This range is a reflection of that, creating something elegant for your kitchen that adds a delicate touch of colour without being over the top. Each piece is hand pipette decorated, which is a highly skilled technique. Every item is therefore unique.

**What's special about your Dogs Trust range?**

I'm hugely proud of this range as 25 per cent of each sale goes directly to the Dogs Trust. I worked with Greg to design a motley crew of dogs that reflects the various shapes and sizes of dogs that need a loving home. The Dogs Trust are a truly wonderful team of people to work with so I hope to continue the relationship and also grow the range for them.

*'I hope our designs simply make people smile. Our main aim is to capture the character of each animal'*

and some wellies to amble around the farm chatting to the animals. I'm sure health and safety rules wouldn't permit it nowadays – such a shame, I loved those visits.

**Your tableware is easily recognisable with its characterful animals. What do you hope these designs bring to other people's homes?**

I hope they simply make people smile. Our main aim is to capture the character of each animal, like with our pheasant character who is forever running the wrong way, as there always seems to be one running haphazardly in the road! It's also quite useful, for example, on a Sunday at a family gathering for a top up of coffee. Mine's always the Labrador mug!

**Can you describe your design process?**

The design process has two parts; the product and the applied design. I always ensure I've designed a product that's both elegant but also functional. I design a product and then live with it for a while before I develop it further. For example, the pouring jug has no handles and fits into the door of the fridge, while the baking dish has lip handles so you don't get the lasagne all over your oven mitts. The applied designs are mainly a team effort with my eldest brother Greg. He runs BAFTA winning agency The Brothers McLeod with my other brother Myles. I go to their studio once or twice a month; Greg is a very talented artist and we laugh a lot coming up with new ideas and designs. He's colour blind so occasionally we get something quite unexpected, like a lime green Golden Retriever. It won't be lime green in production though!

**How exciting is it to see your animal designs on fabrics and to play with larger and smaller prints?** It's been great fun and a huge learning curve. I love seeing the designs in a big format so I am intending on doing large print tea towels.

**Have you considered venturing into the world of zoo animals?** I have discussed this with my brothers – that's all for now.

**How much time do you spend in your kitchen?** I love to cook so I spend a great deal of time in there pottering about, experimenting, and using old family recipes. My great, great aunt was a cook in a large mansion house in London many moons ago and a handful of those recipes have been handed down from mother to daughter. Her gravy recipe is particularly delicious and a precious family secret!

**What's your most treasured belonging?**

Photographs of my family. I am very close to my family and they are wonderful, kind and inspiring people. My nana Adelaide who passed away at 98, a couple of years ago, had the most infectious laugh and she told me to be happy every day, which is a mantra I keep close to my heart. If I look at a photograph of her I can just hear that devilishly cheeky laugh.

**What are your plans for 2015?** I have more ceramics coming out in January and fabrics to launch next autumn. I'm also partnering up with a fabulous chef to create a special range, so watch this space!

*EKBB fenellasmith.com*

**TOP** One of Fenella's most characteristic designs is the pheasant. She has taken this quirky attribute and brought it to life on a variety of tableware. Priced from £10 for the little bowl

**MIDDLE** The Dotty earthenware range includes mini mugs, mugs, little jugs, slim jugs, little bowls, bowls and plates. With a dash of colour, each piece will brighten any breakfast table. Prices start from £7.50 for the egg cup

**BELOW** The Pug, Dachshund and Labrador prints are currently available on linens for AGA toppers, tea towels, double oven gloves (*all shown here*) as well as cushions, linen and cotton fabrics, kitchen gauntlets and aprons. Prices start from £20

**BOTTOM** Create a display using a selection of animal mugs. Here, as part of the dogs mug set, there's a Scottie, Dachshund, Jack Russell, Spaniel, Pug and Labrador. This adorable ceramic set is £87



**Fenella Smith**

Fenella started out studying French at The University of Bristol before feeling she needed to take a more vocational path. She decided to take up Fashion at Nottingham Trent. She set up her country-inspired ceramics and linen label Fenella Smith in 2012 because, as she says, 'I wanted to make products for the home that are elegant, fresh and useful.'





# *In the* MOOD

Collage your ideal kitchen dreamscape by layering ideas of different colour and texture. Moodboards are a great way to solidify your ideas and present your project. Here are three palettes packing a punch for 2015

FEATURE CIARA ELLIOTT

## ALL THAT SHIMMERS

Offset coppers and golds with polished concrete and glossy units, keeping the atmosphere welcoming by adding tactile elements of dark wood and natural fibres

### KITCHEN DETAILS

Bare brick and polished concrete blend with high gloss cabinetry in this kitchen designed by GIQ Design



**&Tradition SR2 megabulb gold pendant** £159, Cloudberry Living



**Wire frame hanging lamp** £179, Out There Interiors

The Pump Street Bakery café in Suffolk, [pumpstreetbakery.com](http://pumpstreetbakery.com) (Photo by Keiko Oikawa)

**THE INSPIRATION** How cosy is this country café scene? I love the wood burning stove, glowing pendant light and Scandi-chic table and chairs. Don't you just want to hang your coat up and sit by that fire?

(Clockwise from top left) Form teapot, £140, Tom Dixon. Tin, stylist's own. Upcycled tray from butter's table, £145, Cox & Cox

1. Ocean Slate 36990 vinyl, from Moduleo's Transform Collection, £26.99 - £36.99 per sq. m
2. Corian Clam Shell 505539 worktop, from £350 per linear metre (30mm thick), Second Nature
3. Amalfi Avorio tile 45x45cm, £35 per sq. m, Piazza Tiles. 4. Textile wall covering 002 from Dedar, £144.50 per sq. m

Parisian Oak Chantilly panels are £335 per sq. m, Element7

**Utensils set** £119, Segno Italiano at Clippings.com



**Tall vase** £190, Hend Krichen, [weareelsewhere.com](http://weareelsewhere.com)

#### KITCHEN DETAILS

A splashback with faux gold leaf completes this sumptuous design by Mowlem & Co

#### THE PAINTS

Caramels, slate greys and shades of deep charcoal temper the warmth of the copper-blush look perfectly



**Amber** £39 per 2.5 litres, Zoffany



**Fawn** £38 per 2.5 litres, Edward Bulmer



**Spanish Brown** £24.29 per 2.5 litres, Dulux

**AA Butterfly chair** £440, Bodie and Fou





#### KITCHEN DETAILS

Bespoke bulthaup  
b1 cabinetry sets  
the tone for this  
kitchen's pure,  
linear design, while  
wide bleached and  
sanded oak flooring  
unites the kitchen,  
dining and living  
areas. Designed by  
Alcantara Evans  
Architects

## NATURAL MADE LUXE

A contemporary and simple all-white kitchen is made rustic with overflowing foliage, both indoor and out, as well as natural elements of wood, wicker and leather in accessories and furniture





**Bocci 38.11 Series chandelier**, from £2,590, Chaplins



De Plantage, Amsterdam, / [caferestaurantdeplantage.nl](http://caferestaurantdeplantage.nl)

**THE INSPIRATION** Floor-to-ceiling windows and doors as well as the lushness of its surroundings makes you stop and take notice of this neighbourhood Amsterdam hotspot

Worktop in Silestone Nebula in Helix, £400 per sq. m, Silestone by Cosentino

Worktop in Misty Carrara, from the Classico Collection, £300-£400 depending on distributor, Caesarstone



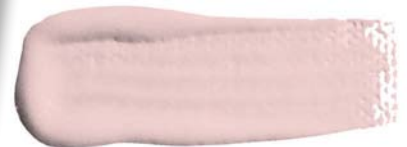
**Basket** £37, Tine K Home



**FLOORING** 1. Driftwood Grey Oak Harmony grade solid wood flooring, from £93.50 per sq. m, Junckers 2. Castle Oak 960 vinyl flooring, Impress range, £29.99 - £39.99 per sq. m, Moduleo 3. Oak Rustic Limehouse White, the Urban Nature Collection, £45 per sq. m, from V4 Woodflooring 4. Original White Crackle Board, £70 per sq. m, Bert and May

**Teak spoon** £19, Bloomingville

**THE PAINTS** Embrace dusky neutrals with just a hint of sugar pink, mint or almond



**Pippas Pink** £41.63 per five litres, Ecos Paints



**Slipper Satin** £36 per 2.5 litres, Farrow and Ball



**Acre** £35 per 2.5 litres, Little Greene



**Natural bamboo stool** £60, Tine K Home



**KITCHEN DETAILS** Alno Cera kitchen featuring Ceramic Oxide Avorio worktops. Prices start from £25,000, The Alno Store, Halcyon Interiors Ltd



## ROMANCING THE STONE

Combine soft tones of heather and slate with wood and cool marble for an elegant update on a classical country look

**KITCHEN DETAILS** Bespoke cabinetry finished with an island topped in Carrara marble custom designed by Cochrane Design



**THE INSPIRATION** We love the chalky pinks, taupes and blues captured on this shop front and terrace of this friendly local kitchen shop, B&B and school



The Mistley Kitchen, Essex, mistleykitchen.com

**THE PAINTS** Take a cue from the above and look to heritage colours of deep blues, heathery purples and boutique greys



**Cover story** £19.49 per 2.5 litres, Crown Paints



**Rose Mallow** £50 per 2.5 litres, Fired Earth



**Pearly Queen** £19.50 per 2.5 litres, Graham and Brown

(From top to bottom) 1. Pewter tiles from The Flecha Collection, £9 per tile, Bert & May  
2. Handmade Encaustic tiles, 8.99 per tile, Fired Earth  
3. Cement tile in Dark Cool Grey, £381 per sq. m, Waterworks

**True Grace dinner candles** £3, John Lewis



**Modern bowls in Deep Purple** £5.95 each, Broste Copenhagen

Oak Hamstead Brown natural wood flooring, £88.85 per sq. m, Ecora



**City AGA** £4,995, AGA



Dark florals at H&M

**Interlaced viscose and cotton fabric**, £121 per sq. m, Dedar



# *essential* KITCHEN BATHROOM BEDROOM



Our handy **ekbb** app lets you carry pages of kitchen, bathroom and bedroom inspiration with you wherever you go. View sample pages for free, or subscribe to explore the entire magazine on the go.



Download the new mobile edition of **ekbb** on your iPad, iPhone, Android device, PC, or Kobo eReader!

TO DOWNLOAD THE APP FOR FREE SEARCH FOR EKBB  
1 ISSUE **£2.99** | 3 ISSUES **£7.99** | 6 ISSUES **£16.99**







# Technology

gorenje

## VINTAGE STYLE

*Retro aesthetics  
mix with modern  
features in this cool  
appliance from the  
Gorenje brand*

The RB602990BL Retro fridge  
boasts SuperCool functions, A++  
energy rating and MultiFlow  
accelerated air circulation.  
Available in 10 colours such  
as Baby Blue, pictured.  
Priced around £700

LATEST NEWS • ECO CHEF TOM HUNT • TECHNOLOGY TRENDS



# TECHNOLOGY NEWS

TAKE CONTROL OF YOUR HOME  
WITH THE LATEST INNOVATIONS

COMPILED BY LUCY MACDONALD



## BOILING POINT

Speed up household chores and save worktop space with the brand new boiling water tap from InSinkErator®. The 3N1 tap provides you with cold, hot and filtered steaming hot water, at the WRAS-approved temperature of 98°C. With a 2.5-litre tank, you can make up to 100 cups of steaming hot water per hour, meaning you can do a tea round for the family and have plenty left to fill pots and pans for cooking dinner. Priced around £799. [insinkerator.co.uk](http://insinkerator.co.uk)



## PRECISION COOKING

Introduce accuracy and control into your kitchen with the newest induction hob from Panasonic. The KY-B64CGBXD has patented Genius Sensor technology which gives you precise temperature control, despite any variable changes in cooking conditions. So even if the temperature suddenly lowers when food is turned over or ingredients are added midway, it is able to quickly and efficiently return to the set temperature. It's priced at £699. [panasonic.com](http://panasonic.com)

## FEELING FRUITY

Make juicing part of your daily routine with the Dual-Max™ Juicer from Dualit. It uses double sieve technology, which juices the fruit and then the rest of the pulp to give you maximum juice from your fruit, leaving you with less waste as well. The 800W motor allows for quick and easy juicing, and the 70mm-wide feeding tube means you can juice whole fruits instead of chopping it up. Priced around £100.

[dualit.com](http://dualit.com)



## Cool Technology

New from Liebherr is the black stainless steel SBSbs 7263 fridge-freezer. Featuring the latest BioFresh technology for food preservation and NoFrost auto defrost technology, it uses a Magic Eye control system to ensure the temperature is kept accurately to the exact degree chosen. Offering ample space with a 364-litre fridge and 256-litre freezer, it's also rated A++ for energy efficiency and comes complete with an ice maker. It will be available from January 2015 and £2,800. [myliebherr.co.uk](http://myliebherr.co.uk)





## Up in the air

Be blown away by the latest cooker hood offering from Miele. The DA6096W Black Wing hood has an inclined canopy which gives you more room to cook in and it can be operated as either a vented or recirculation unit, depending on your preferences. It also offers an extraction rate of 650m<sup>3</sup>/hr and a quiet noise level rating of 54dB. This model becomes available from January 2015 and is priced at £1,300. [miele.co.uk](http://miele.co.uk).

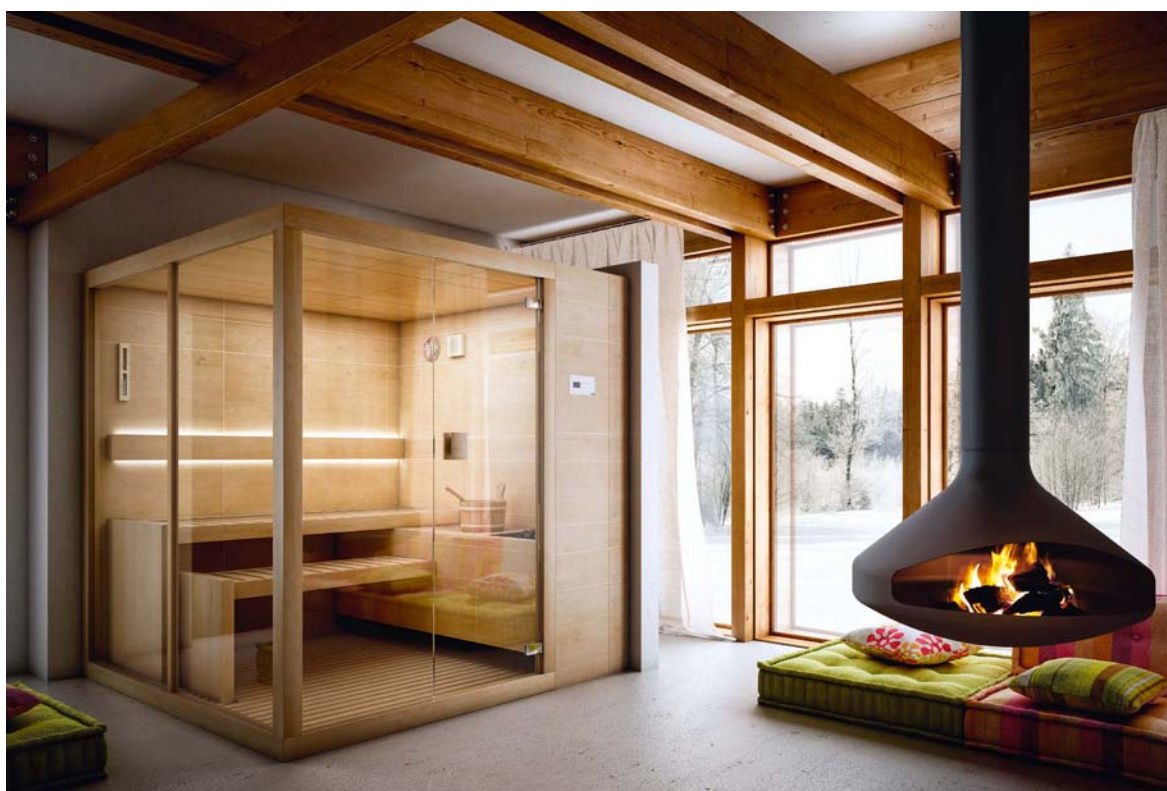
## MUSIC MAESTRO

Listen to your music in style with this compact audio system from Ruark Audio. The R2 model has been completely revamped to include new internal technology such as wi-fi, internet radio, Bluetooth and Spotify Connect. You can also connect multiple R2s to a single wireless network and stream music from a central computer, creating an easy to manage, multi-room system. Priced at £399. [ruarkaudio.com](http://ruarkaudio.com).



## SHOWER POWER

Roca has released its new T-1000 range which includes thermostatic mixer, Even-T shower column with hand shower, and a Rainsense overhead shower head (pictured). It has Roca's SafeTouch feature, which ensures the shower body is always cool to the touch, plus the brand's Quick Reaction technology means that the mixer can reach the desired flow and temperature in under three seconds. Priced at around £762. [uk.roca.com](http://uk.roca.com).



## WINTER WARMER

Just launched as part of the Teuco Spa@Home Collection, the Arja Finnish Sauna offers a dual function: Finnish sauna, which uses very hot dry air between 70-100°C and BioSauna, a treatment combining dry heat and steam with a humidity level of around 65-70%. It comes with chromotherapy and aromatherapy functions as standard. Prices start from £9,384. [teuco.com](http://teuco.com).



MY FAVOURITE KITCHEN APPLIANCE

# Tom HUNT

Food writer, 'eco chef' and restaurant owner Tom Hunt talks us through his culinary inspirations and why he enjoys using his Vitamix blender

FEATURE LUCY MACDONALD & HAYLEY STEED | PHOTOS LAURA EDWARDS

**What features do you like most about the Vitamix blender?** A Vitamix is incredibly versatile. It can chop, cream, blend, heat, grind and churn amongst other nifty features. I think my favourite feature is that it can heat the food while blending, and with incredible efficiency. I have a puréed cauliflower recipe in my book *The Natural Cook* served with poached chicken and fenugreek. The Vitamix can blend the whole cauliflower florets from cold to a perfect warm purée in minutes, making the freshest, silkiest mixture you can imagine.

**What recipes have you created using this appliance?** One of my favourite recipes to make using this powerhouse of an appliance is hemp seed milk. The recipe is very simple and you can keep the milk in the fridge for up to three days. Use this as a delicious omega-3 rich drink, make into a smoothie with your favourite fruit, or even brew it with some spices to make a rather interesting chai tea.

**How did your time travelling the world have an influence on your food?** My travels are the inspiration behind my cooking and recipe writing. Discovering new culinary ideas and recipes from around the world is what floats my boat. We have a vast array of cultural influences in Europe alone. The UK is brilliant at keeping an open mind when it comes to cooking, perhaps it's because our own food sovereignty is so basic that it has led us to culinary heaven. What makes my food different is that I cook these world-inspired recipes with seasonal produce that has been grown locally to my own kitchen.

**Can you tell us a bit about being an 'eco chef' and your outlook on food waste?** Like a lot of people, I cook consciously and like to know where my food has come from, but I take this idea to the extreme and trace all my ingredients to their source where possible. All of my business and culinary activity revolves around sustainability. This is why I only bring seasonal meat and vegetables that have been grown locally to my home kitchen.

**How do you adapt your food to fit the seasons?** Often it's more a case of following the season instead of adapting to it. If I'm cooking at home or writing a menu for my Bristol restaurant, Poco, the first thing I will do is check my seasonal chart. Certain ingredients will jump out at me and I will then think of dishes that fit those ingredients. If I do need to adapt a worldly recipe full of imported ingredients I will normally choose a seasonal equivalent.

**What are your favourite ingredients to use in the winter months?** Despite popular belief we actually have a vast array of seasonal ingredients available to us in the UK. Some of my favourites and stalwarts for the winter months are cauliflower, celeriac, kale, pak choi and turnips.

**What news have you got coming up?** We are looking to open up the next Poco restaurant in Bristol. Our first (very small) restaurant keeps getting busier. Also, I've started mindmapping ideas for my next book, which is a very exciting process for me, as food writing and recipe creation is where my heart lies. [ekbb.com/tomsfeast.com](http://ekbb.com/tomsfeast.com)

## BRILLIANT BAKING

Indulge in a sweet treat from Tom's cookery book, like this Marmalade Polenta Cake (*top right*) where the grainy texture of the polenta mixes beautifully with the sticky marmalade

## GREEN CUISINE

Create a robust and savoury dish with this simple but delicious recipe of Roast Broccoli with Lemon zest and Olive Oil (*bottom left*). Recipes and images from Tom's book, *The Natural Cook*. Published by Quadrille, it's £20 for hardback

## PERFECT BLEND

The Professional Series 750 blender from Vitamix has five pre-programmed settings for smoothies, soups, purées and frozen desserts. Priced at around £650



## Tom Hunt

Acclaimed 'eco chef' and author of *The Natural Cook*, Tom Hunt has been cooking for the past 14 years. He started his career with Ben and Jake Hodges, formerly of The River Café and Moro, and spent time travelling around Europe, Latin America and Asia cooking different cuisines. He opened Poco in Bristol, which serves seasonal tapas using thrifty cuts of meat and seasonal, sustainable produce, and 95% of everything used in the restaurant is recycled at the end of the day.





WORLDLY INSPIRATION  
Tom gathers ideas for recipes from all different sources from his travels across the globe



*'What makes my food different is that I cook world-inspired recipes with seasonal produce'*





Appliances by Wolf are fitted with Control4 technology, which is controlled through a personal tablet



# FUTURE TRENDS

AT THE OUTSET OF A NEW YEAR  
WE LOOK FORWARD TO THE NEW TECH  
REVOLUTIONS SHAPING OUR HOMES NOW

FEATURE **LUCY MACDONALD**

**A**s we look towards the start of 2015 and our minds turn to fresh starts and new innovations, it's incredible to see how far technology has come within our homes. Gone are the days when you had to manually programme your appliances and your devices had limited functionality - today you have a multitude of super-savvy products at your fingertips that will remember your favourite settings, communicate with each other and be controlled via your smartphone or tablet. Beyond touch technology there are splashbacks with integrated televisions, refrigerator doors which change from translucent to opaque depending on your needs and appliances like vacuum cleaners which will even clean your house when you're not at home. Mark Booth, Sales & Marketing Director for Dornbracht UK says: 'Demands for individual and bespoke products have continued to grow and consumer goods are going through a dramatic change at the moment.' From smart lighting and appliances to heating and washing which works remotely, here's our round-up of the latest in home tech concepts and trends. **EKBB**



## 1 BOILING POINT

Experience the future of small appliances with this intelligent wi-fi kettle from Smarter. The base of the kettle connects to your home wi-fi network and using either an Android or iOS app you can have complete control. It can be set to wake you up in the morning with a message letting you know that the water has boiled, and you can select the exact temperature that you want. Not only that, multiple users can be registered, making it the ideal product for a busy household or even the office. **PRICE £99**



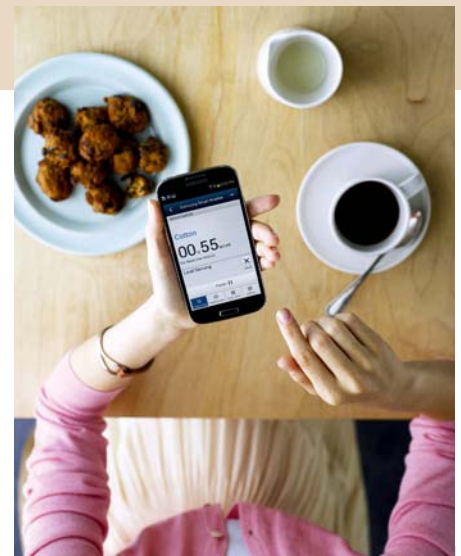




2

### ONE-HIT WONDER

The eUnit (pictured with Tara Ultra tap) is the first electronic product solution for the kitchen from Dornbracht. It uses different functions to help you with all the everyday tasks that need doing. The digital controls dispense water and regulate the flow and temperature, while the foot sensor can even turn the water on or off without you having to lift a finger, for added convenience. Not only that, water can be dispensed in measured amounts, and temperature controlled to one degree. **PRICE** £7,046



### WASH AND GO

Fitting in loads of washing for the family is made easier with the WW9000 washing machine from Samsung. Your 'most-used' cycle pops up automatically, so you can start a wash with just one touch on the screen. You can even organise your washing when you are out and about, by starting or pausing a wash using your mobile phone or tablet, and you can receive notifications telling you how long is left and when the cycle has come to an end. **PRICE** Around £1,699



### LET THERE BE LIGHT

Have your lighting reflect your mood at any given time with the Philips Hue Beyond lamp. It has two connected light sources, an uplight and a downlight, that work together to produce different light effects to echo your needs. So, you can have a white light for everyday tasks and then switch to a more colourful light to create the right ambience for entertaining or relaxing. The two sources can be controlled separately via the Hue app, which is for both smartphones and tablets. The Hue Beyond is now available exclusively at Selfridges.

**PRICE** From £499

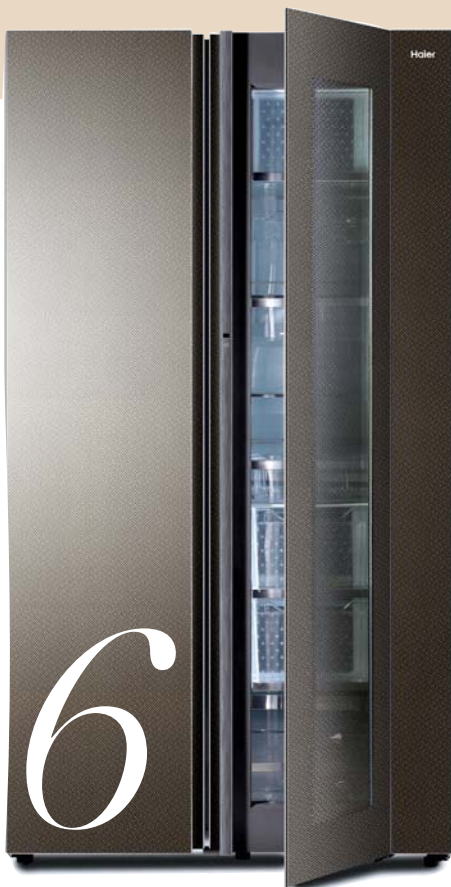


### CLEVER CLEANING

Getting a robot to do your household chores for you is one step closer with the Dyson 360 Eye™ robot vacuum cleaner. The product of 16 years of research, it has infrared sensors with a panoramic camera to triangulate its position in the room. This means it can establish where it has left to clean. It also uses Radical Root Cyclone™ technology to capture the tiniest particles of dust and dirt. There's no price yet, but it should be on sale in the UK by mid 2015.







#### THROUGH THE LOOKING GLASS

Haier takes refrigeration to the next level with this model from its S100 series. It features a translucent glass panel in the door so that you can see what is inside without having to open the door, and it can stay transparent or become opaque depending on your needs. This smart model also uses a sensor to help regulate the humidity levels, ensuring your food stays at the right temperature, and is wi-fi connected so all the functions can be managed via a tablet or smartphone. Watch this space for any future availability in the UK.



#### KEEP CONNECTED

The new generation of cooking appliance technology is here, and leading the pack is the Miele DA6700 D Island Décor hood with the Miele KM6389 induction hob (pictured). The hob and hood work together using the brand's Con@ctivity 2.0 technology. The hood switches on automatically when the hob is turned on and it intuitively adjusts the extraction settings to match the activity on the hob. **PRICE** The hob is £2,400 and the hood is around £3,100



#### MAKING A SPLASH

Say goodbye to the standard splashback and welcome the new generation of fully integrated splashback TVs. Specialist company Futurehome is leading the latest trend of installing mirror glass splashbacks, such as the one pictured, into the kitchen. These work using mirror technology, which reacts with light in order to make the TV both visible and then invisible, depending on whether it is turned on or off. **PRICE** Around £6,000





**IAN BILES**  
SALES DIRECTOR,  
FUTUREHOME

#### What technology trends are you seeing in homes?

The splashback TV is a popular on-trend product for luxury kitchens. Another popular TV is an IP-rated waterproof version with a heated screen to prevent it misting up, which is suitable for relaxation and entertaining areas in the garden, for a bathroom or anywhere where there is moisture, steam or splashes. Fitted flush into the wall, this type is available up to 65in. Cinema rooms are also emerging as a strong trend.

offer ways to improve the efficiency and comfort to people's homes. Home control systems are growing in popularity, and intuitive touch screen systems give unprecedented control of lighting, music, climate and security from easy-to-use apps, which also allows remote access. For example, being able to control your heating system remotely saves energy and time. So imagine that you are going to be late home and you can change the time the heating comes on via your phone or tablet. The options are endless and the future for homeowners is very exciting.



#### How does the future look to the homeowner?

Technology will continue to

### 10 RAPID ACTION

Whirlpool is using innovative technology to cater to the active household by releasing its new 6<sup>th</sup> Sense PowerClean™ dishwashers, which can clean a full load of dishes and completely dry them in just one hour. They use a dual airflow feature and humidity condensing fan which activates during drying, meaning that your dishes are dried quicker, so you can get the next load on. **PRICE** Integrated and freestanding models are £599



#### CUSTOMISED COFFEE

Calling coffee lovers everywhere - the next generation of home coffee machines is here. The TopBrewer by Scanomat can be controlled by either a smartphone or tablet, so you only need to connect your device, personalise your drink and save it into your favourites for the perfect coffee every time.

**PRICE** £7,194



#### CHARGING UP

We love this innovative yet practical new furniture collection, Chill & Charge, from Evoni Design. Consisting of a side table, bedside table, coffee table and breakfast bar, each piece uses magnetic induction to charge phones and smart devices, without the need for any messy wires and cables. An electromagnetic field in the charger, which is embedded into the furniture, transfers power to a receiver, in your smart device, when it is placed on top. Pictured right is the Grey Ash side table. **PRICE** £345





# 12

## THINKING OUTSIDE THE BOX

Achieve a complete sensory experience with the Avec Small Shower Cabin by Zucchetti.Kos, the ultimate self-contained, multi-functional shower box which uses advanced technology to bring light into water. The patented Idrocolore® chromotherapy system has six basic colours which can be mixed by the user via the touch screen, depending on which colours give the individual the most pleasant experience. It also includes adjustable and revolving jets for hydromassage, thermostatic taps and audio settings.

**PRICE** £14,400







### TAPPING INTO TECHNOLOGY

Bathroom taps just got intuitive, and Hansgrohe combines design and functionality with its wall-mounted Axor Citterio electronic basin mixer. It features clever sensor windows integrated into the underside of the spout and they are automatically activated when you place your hands under the spout.

**PRICE** £1,236 for the long spout



*'Convenience and customisation are key, and with advancements in technology, consumers are expecting to see intelligent products integrated into the home and the bathroom environment, just as in every other aspect of daily life'*

**Mark Booth**, Dornbracht UK Sales & Marketing Director



### BRILLIANT BATHING

Create a luxury 'home spa' feel in your bathroom with Dornbracht's Smart Tools on its digital Foot Bath. This electronic and scenario adaptable unit gives you two different options - 'Vitalize', which uses four jets, different pressures and water temperatures to stimulate and refresh, and the 'Relax' programme gives you the chance to sit back and unwind as your feet are dipped in warm shallow water with the temperature and water level rising slowly. **PRICE** From £9,016

15

### MUSIC TO YOUR EARS

Unwind to your favourite sounds with the Sound Wave audio system from Kaldewei. Offering the latest technology for the bath, this audio system plays music from Bluetooth-enabled systems such as laptops, tablets and smartphones, and keeps your bathroom looking sleek as everything is hidden under the bath.

**PRICE** Audio system is £610; Meisterstück Asymmetric Duo bath, £5,041





# HURLINGHAM

## The Bath Company



### SCHOONER

Faux Gold Leaf

Wallpaper: Young & Battaglia

[www.hurlinghambaths.co.uk](http://www.hurlinghambaths.co.uk)

For Stockists: T: 01400 263310 E: [sales@hurlinghambaths.co.uk](mailto:sales@hurlinghambaths.co.uk)



# Bathrooms

## APRÈS-SKI

*Is there anything better than relaxing into a luxuriously warm bath on a winter's evening? Alpine view optional...*

SCOOP bathtub by Michael Schmidt in BioBased Cristalplant, available in Black, Mink, Copper, Cement and Aubergine, £8,544, Falper



INTERIOR DESIGNER BATHROOM • RADIATORS • SCARLET SCHEME





BC Designs Flag Bath



bcdesigns

classic & contemporary baths

The Design Works, Allens Farm, Tye Road, Elmstead Market, Essex CO7 7BN

**Tel: 01206 827100**

Fax: 01206 827800

Email: [sales@bcdesigns.co.uk](mailto:sales@bcdesigns.co.uk)

[www.bcdesigns.co.uk](http://www.bcdesigns.co.uk)

[www.bathroomlighting.co.uk](http://www.bathroomlighting.co.uk)



# Bathroom News

*The latest launches and our favourite bathing beauties*

WRITTEN BY KIRSTEN JONES



## SHOWERING TRADITION

If you'd like to bring an element of period-style into your bathroom, take a look at the new collection from Samuel Heath. Style Moderne includes a range of taps and showers with a 1920s Art Deco design.

Featuring geometric shapes and straight lines, the exposed valve thermostatic shower in City Bronze is from £4,541. [samuel-heath.co.uk](http://samuel-heath.co.uk).

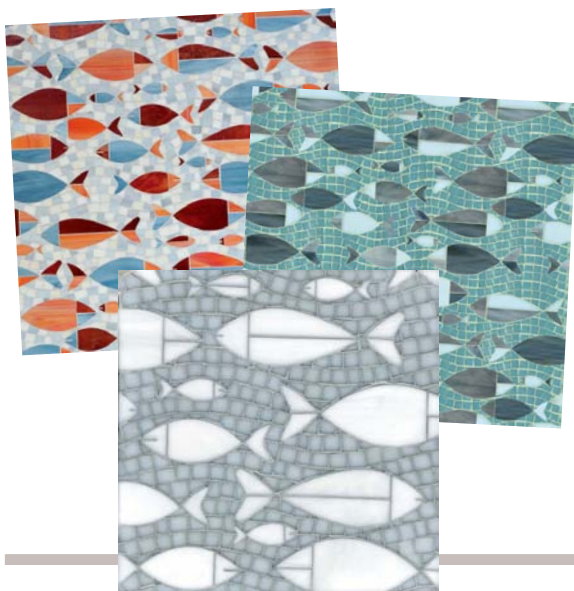


## Classic CENTREPIECE

This Rimini cast iron bath from Aston Matthews accentuates the classic feel of this room. It's charcoal exterior pairs beautifully with the polished brassware and pastel palette, while ornate feet add a touch of glamour. Available with or without tap holes, this twin ended and primed bath can be painted to your taste and is priced at £984. [astonmatthews.co.uk](http://astonmatthews.co.uk).

## Under the sea

We love how the Floating Fish tile collection from Paris Ceramics takes inspiration from mosaics found in traditional Roman baths. Part of the Symmetry collection of wall and floor surfaces, they feature precious gemstones such as Pearl, Quartz, Tourmaline and Moonstone to create the striking coloured patterns. From £1,954 per sq. m. [parisceramics.com](http://parisceramics.com).



## WARMING UP

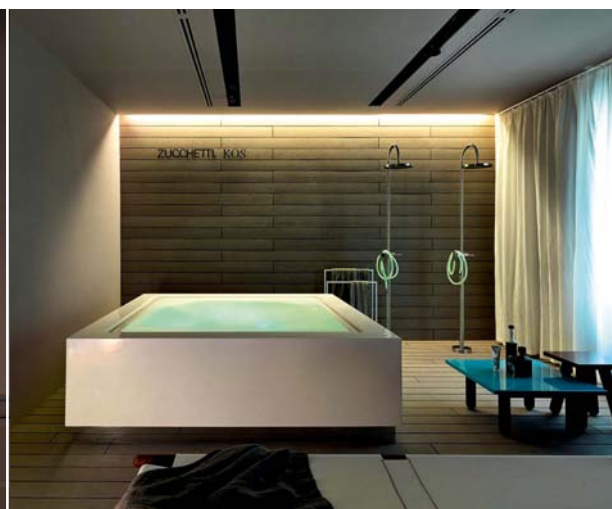
Do you want to heat up your bathing space but not have an imposing radiator? If so, check out the Ice Bagno range from Caleido which provides a modern take on traditional towel warmers, with slim designs in a colourful range of sizes and finishes. Each piece is crafted from flexible carbon or stainless steel. The radiator (as shown) is priced from £1,270 in matt white. [caleido.co.uk](http://caleido.co.uk).





## STAR OF THE SHOW

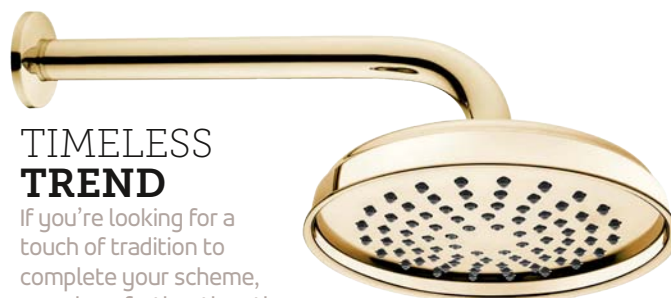
Recently opened in Italy's style capital, Milan, the new Zucchetti. Kos showroom offers an expansive 200m<sup>2</sup> space of stunning bathroom products. It's the brand's first dedicated space in this exciting, design-conscious city, displaying luxurious room sets to give the perfect preview of how the designs would look in your home. With five eye-catching display windows, you won't be able to walk by without taking a peek. [zucchettikos.it](http://zucchettikos.it).



Delos brushed oak **cabinetry**, from around £914 and D-Code **washbasin**, around £263, Duravit



Don't let the dark winter nights dictate your colour palette. With Duravit's new Delos furniture collection, designed by EOOS, create a bright, open bathing space using light oak real-wood veneer, brushed walnut or high gloss white finishes. The complete range is characterised by minimalist design, including wall-hung pieces with simple lines. The floating cupboards offer storage with no visible support below which is great for space-saving. You can choose from wall-mounted consoles, tall, semi-high and mirror cabinets, vanity units, glass shelves and maple or walnut drawer organisers. [duravit.co.uk](http://duravit.co.uk).



## TIMELESS TREND

If you're looking for a touch of tradition to complete your scheme, search no further than the Elegance range from Vitra. Perfect for any bathroom style, this striking round shower head can be ceiling or wall-mounted, and purchased as a shower column with either one or two heads. The Elegance wall-mounted shower head above costs from £280, while a bath/shower mixer and ceiling mounting can be purchased alongside. [vitra.co.uk](http://vitra.co.uk).

## Black beauty

Specialist bathroom brassware brand Vado has added a black ceramic lever handle option to its traditional Kensington range, suited to the modern-classic bathroom. The range includes taps, mixers and thermostatic shower valves, all available in chrome and gold finish options. The three-hole wall-mounted basin mixer (shown) costs £348. [vado-uk.com](http://vado-uk.com).





# THE BATHROOM SALE STARTS 27th DEC



## C.P. HART

LONDON SHOWROOMS: WATERLOO CHELSEA CHISWICK FULHAM NOTTING HILL MUSWELL HILL WIMBLEDON PRIMROSE HILL REGENTS PARK ROAD  
NATIONAL SHOWROOMS: GUILDFORD MANCHESTER ST ALBANS TUNBRIDGE WELLS

[www.cphart.co.uk](http://www.cphart.co.uk)



# Hidden Haven

Interior designer Thomas Griem has transformed a poky old office into a spacious sanctuary

PICTURES PHILIP VILE | WORDS AMELIA THORPE

*f*aced with a 70s-built mews house in central London that had definitely seen better days, interior designer Thomas Griem of TG Studio was up against a significant challenge. 'Over the years, the house had been used as offices and had lots of rather dark and poky rooms,' he recalls. 'Our task was to transform it back into a home and create a modern, welcoming living space.'

The three storey house was stripped back to its structural walls and roof before reinstatement began. The entire top floor was to become the master suite with large bedroom, walk-in wardrobes and inviting bathroom. 'We decided to make the whole floor open-plan with the feel of a beautiful hotel suite, and one of the best ways to create a sense of luxury is to create a very large and spacious bathroom,' explains Thomas. Here, with the whole floor given over to the suite, a simple sliding door between the bedroom and bathroom enhances the sense of space. The floor can be entirely open, or the bathroom closed off when privacy is required.

To design the bathroom scheme, Thomas teamed classic fittings with Metro white tiles to produce a sophisticated London feel. The bevelled white tiles create a clean, retro utilitarian backdrop, the elements of black provide a strong contrast, and a linear wooden basin stand and chunky shelves add warmth. 'The look is modern, but not minimal, and its success comes from contrasting traditional elements, such as the taps and retro tiles, with the architectural niches in matt black lacquer,' says Thomas. And the finishing touch? 'The Arabescato marble behind the basin and in the shower enclosure adds a note of timeless luxury,' he says. **EKBB**





### ON DISPLAY

The sliding door glides open to reveal the freestanding bath and dramatic matt black lacquer wall niche with simple oak display shelf

### RETRO METRO

The wall tiles hark back to the days of the Paris Metro, their simple, brick shapes creating a clean, utilitarian look, which contrasts with the elements of the black and white-oiled oak in the scheme





## DETAILS COUNT

The niche above the basin is finished in Arabescato marble, as is the niche in the shower



**THOMAS GRIEM**  
FOUNDER AND  
DIRECTOR, TG STUDIO



### How did you begin to plan the project?

The layout came first: the bath and basin can be seen from the bed, while the shower and W/C are tucked around the corner for privacy. The freestanding bath is positioned below the window, with basin alongside, because there is maximum natural light in this particular area of the room.

### How important is storage in this room scheme?

I always like to incorporate

carefully thought-out storage in a bathroom, so there is plenty of space to tuck toiletries and towels away. This keeps the room feeling neat and calm. Here we created a false wall behind the basin. This conceals the plumbing and also provides space for the wall niches and large, recessed mirrored cabinet.

### Can you tell us about the materials in the mix?

The matt black lacquer wall 'boxes' add an architectural

feel, and contrast with the cool white of the metro tiles as well as the simplicity of the neutral sanitaryware. The basin stand is made of oak and finished with a white oil. Together with the thick shelves in the same wood, they add warmth to the scheme, while we echoed the black of the wall niches in the tap levers and the floor. The marble behind the basin and in the shower combines the light and dark tones together with the dramatic elegance of natural stone.

## ***Bathroom profile***

White Metro tiles create a utilitarian backdrop to this spacious bathroom, offset by matt black lacquer wall 'boxes' in crisp contrast. A white-oiled oak basin has warmer tones, while accents of Arabescato marble and traditionally-styled brassware strike notes of classic luxury.

### TG STUDIO

10 Rathbone Place, London, W1T 1HP.  
Tel 020 7636 3838. [tg-studio.co.uk](http://tg-studio.co.uk)

Interior design and architecture services for residential and commercial projects around the world. Prices are on application.





**BACK TO BLACK**  
The Classic Black taps take their inspiration from designs of the 1900s

*‘The look is modern but not minimal, and its success comes with contrasting traditional elements, such as the retro taps and tiles, with the architectural niches in matt black lacquer’*

## Stockists

### FIXTURES AND FURNISHINGS

Starck freestanding **bath**, £2,150; D-Code **shower tray**, £137, both Duravit. 1900 Classic Black lever bath **shower mixer** with standpipes, £1,200; 1900 Classic Black lever three-hole **basin mixer**, £421; Exposed black lever **thermostatic mixing valve** with riser kit, handset, lever diverter and 6in rose, £1,600, all Lefroy Brooks. Memento **basin**, £398; Subway wall-mounted **pan** with seat and

cover, £438, Villeroy & Boch. Napoli clear glass **shower enclosure**, bespoke size, £1,700, Majestic Showers. Bespoke **basin console**; Arabescato marble **splashback**, priced to order; Bespoke mirror **cabinet**, all TG Studio. Deline electric **towel warmer**, £598, Bisque. Retro Metro Swiss Cottage **wall tiles**, £75 per sq. m, Fired Earth. S19 Matt porcelain **floor tiles**, from £53 per sq. m, Bibliotheque. Flos Mini Glo Ball **wall lights**, £80 each, Heal's.

FOR STOCKISTS, SEE PAGE 122



# Vitra

REQUEST A DESIGNER COLLECTION BROCHURE FROM YOUR LOCAL RETAILER TODAY.

FOR MORE INFORMATION ON VITRA'S EXCEPTIONAL RANGE PLEASE VISIT OUR WEBSITE [WWW.VITRA.CO.UK](http://WWW.VITRA.CO.UK)  
OR VISIT ONE OF OUR STOCKIST LISTED BELOW.

## Berkshire

### UK Bathroom Warehouse

Newbury, RG14 5PF - 01635 35860  
[www.ukbathroomwarehouse.com](http://www.ukbathroomwarehouse.com)

## Bristol

### Bathroom Solutions Bristol

BS1 6LS - 0117 929 9227  
[www.bathroomolutionsbristol.co.uk](http://www.bathroomolutionsbristol.co.uk)

### Bootwater Bathrooms

Portishead, BS20 6BQ  
01275 844580  
[www.bootwaterbathrooms.co.uk](http://www.bootwaterbathrooms.co.uk)

## Buckinghamshire

### Imbue Kitchen Design

High Wycombe, HP12 3SE  
01494 888010 [www.imbue.co.uk](http://www.imbue.co.uk)

### PHS Plumbing & Heating Supplies

Milton Keynes, MK1 1QU  
01908 630008 [www.phsmk.com](http://www.phsmk.com)

### Watermark (PHS) Ltd

Nr. Aylesbury, HP18 9UL  
01844 338137

[www.watermark.gb.com](http://www.watermark.gb.com)

## Cheshire

### Glowquest Bathrooms

Ellesmere Port, CH65 4AR  
0151 355 7715

[www.glowquest.com](http://www.glowquest.com)

### Harry Bates

Stockport, SK2 6QS - 0161 292 2020  
[www.harrybates.co.uk](http://www.harrybates.co.uk)

### JDC Ceramics & Bathrooms Ltd

Widnes, WA8 7RA - 0151 420 0705  
[www.jdcceramics.co.uk](http://www.jdcceramics.co.uk)

### Kitchen & Bathrooms Ltd

Macclesfield, SK11 7NX  
01625 439977

[www.kitchenandbathroomers.co.uk](http://www.kitchenandbathroomers.co.uk)

### Oceans Bathrooms

Cheshire, CH4 8SQ - 01244 677875  
[www.oceansbathrooms.co.uk](http://www.oceansbathrooms.co.uk)

### S C & P Jones

Cheshire, SK9 5JH - 01625 524261  
[www.scpjones.com](http://www.scpjones.com)

### Smart Bathrooms Ltd

Warrington, WA4 4RZ  
01925 261261

[www.smartbathroomsLtd.com](http://www.smartbathroomsLtd.com)

### Tubs & Loos Ltd

Cheadle, SK8 3BH - 0161 437 8010  
[www.opulenza.co.uk](http://www.opulenza.co.uk)

### Cleveland & Recar

#### HS Interiors

Middlesbrough, TS4 2AP  
01642 243403

[www.hsinteriors.co.uk](http://www.hsinteriors.co.uk)

## Clwyd

### Glowquest Bathrooms

Flintshire, CH5 4DE  
01244 831 117

[www.glowquest.com](http://www.glowquest.com)

## Cumbria

### Billington Design

Kendal, LA9 4DN - 01539 722774  
[www.billingtondesignbathrooms.co.uk](http://www.billingtondesignbathrooms.co.uk)

## Derbyshire

### Creative Interiors

Derby, DE1 3BH - 01332 384444  
[www.creativeinteriors.co.uk](http://www.creativeinteriors.co.uk)

### Discover Bathrooms Ltd

Chesterfield, S45 9DX  
01246 863059

[www.discoverbathroomsLtd.co.uk](http://www.discoverbathroomsLtd.co.uk)

### Inside Out Buxton

Buxton, SK17 7BD - 01298 70767  
[www.insideoutbuxton.co.uk](http://www.insideoutbuxton.co.uk)

## Devon

### Studio One South West

Plymouth, PL1 3RP - 01752 221765  
[www.one-royalwilliamyard.co.uk](http://www.one-royalwilliamyard.co.uk)

### Plumb-In Ltd

Exeter, EX4 3BR - 01392 221035  
[www.imperialbathroom.com](http://www.imperialbathroom.com)

### The Honiton Tile Company

Honiton, EX14 1SJ - 01404 549 900  
[www.honitontileandbathroom.co.uk](http://www.honitontileandbathroom.co.uk)

### Totnes Tile Studio Ltd

Totnes, TQ9 5JA - 01803 865 865  
[www.totnestile.co.uk](http://www.totnestile.co.uk)

## Dorset

### Dunkley Tiles

Bournemouth, BH9 2PW  
01202 526206

[www.dunkleytiles.co.uk](http://www.dunkleytiles.co.uk)

### Island Bathrooms

Bournemouth, BH8 8AY  
0330 111 6075

[www.islandbathrooms.co.uk](http://www.islandbathrooms.co.uk)

## Durham

### Ivan Simson

DH1 5HA - 0191 3860193  
[www.isbath.com](http://www.isbath.com)

### AQS Bathrooms

Spennymoor, DL16 7RS  
01388 420690

[www.aqsbathrooms.com](http://www.aqsbathrooms.com)

## Essex

### Teddys Bathrooms & Kitchens Ltd

Ingatstone, CM4 9DU  
01277 350800

[www.teddysathome.co.uk](http://www.teddysathome.co.uk)

## Hampshire

### Bathroom Warehouse

Winchester, SO23 7RX  
01962 862554

[www.bathroomwarehouse.com](http://www.bathroomwarehouse.com)

### Bathrooms by Unique

Southampton, SO30 2JW  
01489 776945

[www.bathroomshampshire.co.uk](http://www.bathroomshampshire.co.uk)

### Sovereign Bathrooms

Southampton, SO30 2FX  
023 8001 9110

[www.sovereignbathrooms.com](http://www.sovereignbathrooms.com)

### The Bathroom & Kitchen

#### Academy

Southampton, SO45 4PT  
023 8084 2848

[www.thebathroomandkitchenacademy.co.uk](http://www.thebathroomandkitchenacademy.co.uk)

## Hertfordshire

### Stevenage Plumbing Supplies

Stevenage, SG1 2XS - 01438 725309  
[www.stevenageplumbing.co.uk](http://www.stevenageplumbing.co.uk)

## Humberside

### Quality Bathrooms

Scunthorpe, DN15 8NJ - 01724  
388565 [www.qualitybathroomsLtd.co.uk](http://www.qualitybathroomsLtd.co.uk)

## Lancashire

### Advanced Bathroom Design

Nelson, BB9 5SP - 01282 611172  
[www.advancedheatingspares.co.uk](http://www.advancedheatingspares.co.uk)

### Discount Bathrooms

Preston, PR2 2LE - 01704 566404  
[www.discountbathrooms-northwest.co.uk](http://www.discountbathrooms-northwest.co.uk)

### Great Harwood Plumbing

Blackburn, BB6 7ED  
01254 889785

### Neil Barnes Interiors

Leyland, PR25 2FQ - 01772 457 939  
[www.neilbarnesinteriors.co.uk](http://www.neilbarnesinteriors.co.uk)

### The Original Bathroom Company

Ltd  
Preston, PR4 5NB - 01772 611622  
[www.originalbathroomcompany.co.uk](http://www.originalbathroomcompany.co.uk)

### Tilemart Direct

Preston, PR1 4HH - 01772 258998  
[www.tilemart.co.uk](http://www.tilemart.co.uk)

## Leicestershire

### Bathrooms By Martin Johnson

Leicester, LE9 4FH  
01455 274 014

## London

### Aqualite Trading Ltd

Wembley, HA0 1YP - 020 8900 9182  
[www.aqualite.co.uk](http://www.aqualite.co.uk)

### Bathroom Discount Centre

Fulham SW6 6BW - 020 7381 4222  
[www.bathdisc.co.uk](http://www.bathdisc.co.uk)

### City Plumbing Ltd

South Woodford, E18 1HB  
020 8504 5152

[www.cityplumbing.co.uk](http://www.cityplumbing.co.uk)

## Decorium

North Circular Road, NW2 7AX  
0208 43 88 222

[www.decorium-uk.com](http://www.decorium-uk.com)

## ElecMec

Stanmore, HA7 1JR - 020 8731 5653  
[www.adwater.co.uk](http://www.adwater.co.uk)

## Elite Bathrooms & Plumbing

Wood Green, N22 8LZ  
020 8365 8868

[www.elitebathrooms.net](http://www.elitebathrooms.net)

## Italia Tiles Ltd

Colindale, NW9 0HN  
020 8905 9444 [www.italia.co.uk](http://www.italia.co.uk)

## Jones Plumbing Supplies

Croydon, CR0 2EH - 020 8684 8099  
[www.jonesplumbing.co.uk](http://www.jonesplumbing.co.uk)

## Navton Bathrooms

Maida Vale, NW6 5PS  
0207 625 8579

[www.navtonbathrooms.co.uk](http://www.navtonbathrooms.co.uk)

## Nuline Bathrooms

North Kensington, W10 5UP  
020 8206 5177 [www.nu-line.net](http://www.nu-line.net)

## Plumbwise

Finchley, N3 3HP  
020 7768 4775

## Radiator and Bathroom Gallery

Wandsworth, SW18 4SX  
0800 055 6450

[www.theradiatorgallery.com](http://www.theradiatorgallery.com)

## WC One

Blackheath, SE3 9RQ  
020 8297 1118 [www.wcone.co.uk](http://www.wcone.co.uk)

## Manchester- Greater

### Aqua Bathing Excellence

Wigan, WN6 0HN - 01257 425 812  
[www.aquabathrooms.co.uk](http://www.aquabathrooms.co.uk)

## Bolton Bathrooms

Bolton, BL1 2QE - 01204 384704  
[www.boltonbathrooms.co.uk](http://www.boltonbathrooms.co.uk)

## Boro Bathrooms

Bury, BL9 7AF - 0161 761 5926  
[www.borobathrooms.co.uk](http://www.borobathrooms.co.uk)

## Merseyside

### Discount Bathrooms

Southport, PR8 4QN - 01704 566404  
[www.discountbathrooms-northwest.co.uk](http://www.discountbathrooms-northwest.co.uk)

## Embee Builders Merchants

Wirral CH45 5LA - 0151 639 6127  
[www.embeeltl.co.uk](http://www.embeeltl.co.uk)

## Wirral Wet Rooms

Wirral, CH61 3UA - 0151 648 5564  
[www.wirralwetrooms.co.uk](http://www.wirralwetrooms.co.uk)

## Norfolk

### Blaines

Swaffham, PE37 7DG  
01760 724418 [www.blaines.co.uk](http://www.blaines.co.uk)

## Nottinghamshire

### Palmers Kitchens, Bedrooms and

#### Bathrooms Ltd

Nottingham, NG2 5FF  
0115 982 0820

[www.palmersoftrentbridge.co.uk](http://www.palmersoftrentbridge.co.uk)

### Solutions Bathroom & Kitchen

#### Centre

Sutton-In-Ashfield, NG17 4FL  
01623 515793

[www.bathroomandkitchensolutions.co.uk](http://www.bathroomandkitchensolutions.co.uk)

## Oxfordshire

### UK Bathroom Warehouse (Oxford)

Oxford, OX1 4RA - 01865 726021  
[www.ukbathroomwarehouse.com](http://www.ukbathroomwarehouse.com)

### UK Bathroom Warehouse

#### (Wallingford)

Wallingford, OX10 9BS  
01491 832321

[www.ukbathroomwarehouse.com](http://www.ukbathroomwarehouse.com)

## Portsmouth

### Bradleys Of Portsmouth

PO2 9AA - 02392 696751  
[www.bradleysofportsmouth.co.uk](http://www.bradleysofportsmouth.co.uk)

## Rutland

### Rutland County Bathrooms Ltd

Oakham, LE15 6QF - 01572 757999  
[www.rutlandkitchensandbathrooms.co.uk](http://www.rutlandkitchensandbathrooms.co.uk)

## Scotland- Glasgow

### Crest Bathrooms

G52 4BN - 0141 882 7799  
[www.crestbathrooms.co.uk](http://www.crestbathrooms.co.uk)

## Victor Paris

G3 8AZ - 0845 607 6944  
[www.victorparis.com](http://www.victorparis.com)

## Bathtime Glasgow

G74 4QZ - 01355 267090  
[www.bathtimescotland.co.uk](http://www.bathtimescotland.co.uk)

## Ware with all

Greenock, PA16 7QB

01475 732777

[www.warewithall.co.uk](http://www.warewithall.co.uk)

## Scotland- Grampian

### Paterson of Oldmeldrum

Oldmeldrum, AB51 0BZ  
01651 872380

[www.patersonkitchens.co.uk](http://www.patersonkitchens.co.uk)

### Newline Building Products

Fraserburgh, AB43 9TB  
01346 518878  
[www.newlinebuildingproducts.co.uk](http://www.newlinebuildingproducts.co.uk)

## Scotland- Angus & Dundee

### M&M Bathrooms

Dundee, DD4 7PY - 01382 455168  
[www.mmplumb.co.uk](http://www.mmplumb.co.uk)

## Victor Paris

Dundee, DD4 6QH - 0845 607 6944  
[www.victorparis.com](http://www.victorparis.com)

## Scotland- Borders

### Bathroom Planet (Galashiels)

Galashiels TD1 3RS - 01896 759944  
[www.bathroomplanetborders.co.uk](http://www.bathroomplanetborders.co.uk)

## Scotland- Central

### Bathroom Planet (Stirling) Ltd

Stirling, FK7 7UU - 01786 472227  
[www.bathroomplanet.co.uk](http://www.bathroomplanet.co.uk)

## Scotland- Dumfries & Galloway

### Splash Bathrooms

Castle Douglas, DG7 1HY  
01556 504978

[www.splashbathroomsdc.co.uk](http://www.splashbathroomsdc.co.uk)

## Scotland- Edinburgh & Lothians

### Victor Paris

Edinburgh, EH11 1DQ  
0845 607 6944

[www.victorparis.com](http://www.victorparis.com)

## Shropshire

### Farr & Harris Limited

Shrewsbury, SY3 7FA  
01743 236371 [www.farrharris.co.uk](http://www.farrharris.co.uk)

## Somerset

### Harry Powell

Clevedon, BS21 7LN - 01275 875907  
[www.harrypowell.com</](http://www.harrypowell.com)





COMBINING CONTEMPORARY FORMS  
WITH SMART FUNCTIONALITY, NEST  
OFFERS DESIGNER SOLUTIONS WITH  
LUXURY FINISHING TOUCHES.





# Scarlet STYLING

*Make a bold statement with an injection of rich red colour against crisp white furniture and bath linen. Shape with modern lighting and detailed accents, adding dark marble flooring for warmth*

COMPILED BY KIRSTEN JONES

- 1** Luna mirror cabinet, from £281, Roca  
**2** Astonian Rimini cast iron roll top bath, £1,292, Aston Matthews  
**3** HV1 one-handle mixer with fixed spout, around £435, Vola  
**4** Flos Foglio wall light, £183, John Lewis  
**5** Floral vase, £39.99, Zara Home  
**6** Grey marquina marble flooring, £250 per sq. m, Mandarin Stone  
**7** 630 Cumano occasional table, around £360, Zanotta  
**8** Medium bath module, £3,195, Vipp  
**9** Walton Blanc bath towel, £59.95, Yves Delorme  
**10** Gant liquid soaps, £15 each, Amara

FOR STOCKISTS, SEE PAGE 122





#### BATHROOM FURNISHINGS

This modern bathroom features the Kos Morphing steel **console** with integrated **washbasin** in Bianco finish, from £2,800; Zucchetti Isystick wall-mounted built-in single-lever basin **mixer** with aerator in Rosso finish, from £345; Kos Morphing freestanding **bath tub** in Rosso finish, from £5,000; Zucchetti Isystick freestanding single lever bath-shower **mixer** in Rosso finish, from £2,527; Zucchetti Pan+ ZAC662 **mirror**, from £741, all Zucchetti.Kos



## WARMING UP

Create some shape and style with the Stratos radiator in stainless steel. It costs £918 from The Radiator Company





# Feel the heat

*Choose one of these radiators to help keep your towels toasty*

COMPILED BY KIRSTEN JONES



**1** Glee designer radiator in high gloss black, £492, Hudson Reed **2** Four-bar wall-mounted towel rail in chrome, from £2,262, Drummonds **3** Palmari designer chrome towel rail, £225, Designer Bathroom Concepts **4** Wilsford steel towel rail with copper finish, £310, Carron **5** Vincent radiator in chrome with angled valves, £399, Burlington Bathrooms **6** Wall-hung heated towel rail with radiator in Antique Copper finish, £2,292, Holloways of Ludlow **7** Cobra-therm radiator in Jet Black, £764, Bisque **8** Teatro heated towel rail with gold finishing, from £1,329, Brandoni **9** Triarc towel rail by Paul Priestman in black, £896, Iconic Radiators

FOR STOCKISTS, SEE PAGE 122





PLEASE SCAN THIS QR CODE  
INTO YOUR MOBILE DEVICE



# matki | SHOWERING



pure MATKI

The New Boutique Walk-In Shower Surround with slimline tray. Effortlessly luxurious and uniquely styled; the ultimate wet room experience, which keeps the water inside





## A COLLECTION OF LUXURY WARDROBES


01483 22 55 00

To view our online brochure & find your nearest designer  
[theenglishwardrobecompany.com](http://theenglishwardrobecompany.com)

THE  
 ENGLISH  
 WARDROBE  
 COMPANY



# Bedrooms



**DARK AS EBONY**  
*Embrace your home's  
industrial features  
and accessorise  
the space with rich  
monochrome textiles*

Fade handmade leather rug, from  
£450, Woven Ground

NORDIC STYLING • STATEMENT WALLPAPER • BEDSIDE TABLES



# Bedroom News

*The latest launches, trends and inspiring things*

WRITTEN BY EMMA FOALE



Eva kingsize headboard, £465; Alice kingsize valance in Miller, £290; Sophia bed linen, from £27; Florence cushion in Elliot, £56; Cotswold mohair throw in Pewter, £110, all Neptune

## REST YOUR HEAD

Not to be overlooked, a headboard will silhouette your bed and add a sophisticated look. The new collection from Neptune features five tailored headboards, each available in four different sizes and 13 fabric options in linen and wool. You can also choose from a selection of comfortable mattresses and linens to help dress your bed for winter. [neptune.com](http://neptune.com).



## INTO THE LIGHT

Illuminate a dark corner or shine a spotlight over your shoulder as you read in bed – either way, focal lighting is a key consideration for your bedroom. The Lumina collection from Aram Store includes floor, desk and bedside lighting, all with similar streamlined looks and LED technology. The Flo bedside table lamp in matt white (shown) is from £295. [aram.co.uk](http://aram.co.uk).

## PEARLS OF WISDOM

Staying true to the 19th century shade, architectural historian and colour expert Edward Bulmer has created an updated version of 'Pearl colour' for walls and woodwork – achieving a pale radiance similar to a pearl. Natural emulsion starts from £38 for 2.5 litres. [potsopaint.com](http://potsopaint.com).

## Finishing touch

It's all in the detail – or so the saying goes. Remember this when making decorative decisions on fabrics and upholstery. The Gala collection of tapes, cords and tie backs by renowned designer Lori Weitzner for Samuel & Sons is inspired by iconic New York landmarks drawing on Art Deco and architectural features. From £19 per metre. [samuelandsons.com](http://samuelandsons.com).



## Nordic HERITAGE

Since its launch in the 70s, Skagerak has stuck to its ethos of producing designs that are beautifully crafted and stand for longevity. Using traditional Scandinavian materials such as wood, each piece embraces a signature simplicity. The Georg stool, £225, and console table, £399, are available in oak or painted black oak (as shown). [nest.co.uk](http://nest.co.uk).





## OH SO SUBTLE

Giving a modern update to traditional styles, the Pimlico range is new to the collection of luxurious fabrics from James Hare. Cobble, shown on the seat cushion, and Ebury on the cushion, have beautiful yet understated embellishments which work well together and suit modern interiors. From £70 per metre. [james-hare.com](http://james-hare.com).



## FLORAL FANCY

If you love the classic floral designs on the array of fabrics from Cabbages & Roses, then you'll be pleased to hear that you can mix and match existing fabrics with the latest range of wallpaper. Paris Rose Blue, Catherine Rose Pink, Alderney Raspberry and Hatley Raspberry wallcoverings are £48 per 10m roll. [cabbagesandroses.com](http://cabbagesandroses.com).

## A storage dream

If designing your own wardrobe is a tempting idea, take a look at the flexible and made-to-measure, frameless sliding door walk-in wardrobes from Brilliant Project. They're very versatile as they can be moved from room to room or even taken with you if you decide to move home. Using the online design service, you can choose from a variety of styles, colours, wood grains or glass. [brilliantproject.com](http://brilliantproject.com).



Frameless sliding door **walk-in wardrobe** in Natural Cashmere with Red Berry inset, from £7,169 including installation, Brilliant Project.

## WRAP UP WARM

If you're snuggling up by the fire or under the duvet to read a book, make sure you've plenty of cosy textiles, such as cushions, throws and blankets, close by. We love this blue and white herringbone striped wool throw, £79, from the spun and woven range at Plum & Ashby. [plumandashby.co.uk](http://plumandashby.co.uk).



## Nature's WONDERS

Inspired by natural, earthy colours and textures, the Enchanted Forest collection from Porta Romana has a strong aesthetic running throughout. It features lighting with glass that resembles frozen ice, crafted furniture with rustic materials and accessories such as carefully glazed ceramics. [portaromana.co.uk](http://portaromana.co.uk).

Lille table lamp in Versailles Gold with 5in tall cylinder Dune Grass shade (left), £989; Hedgehog lamp with Gold collar and 7in Top Hat Dune Grass linen shade, £1,064, both Porta Romana





# *Prints* *charming*

Give your sleeping space a theme with wallpaper that creates a statement, from tile and timber effects to bold geometric designs

FEATURE HAYLEY GILBERT

## HERITAGE DESIGN

Featuring dainty hummingbirds with their iridescent feathers as they flit amongst wild grasses, the Tuileries 214083 is a faithful interpretation of a document from the Sanderson wallpaper archive. Priced at £58 per roll, it's printed in such a way that captures the hand-blocked feel of the original and is available in four colourways – perfect for creating a romantic setting with a traditional twist





## EASTERN INFLUENCE

**Top left** This Japanese-themed print from Farrow & Ball is called Shouchikubi, meaning apricot, bamboo and pine which are all plants associated with celebration. The BP 4502 design costs £105 per roll and has a distinctive Oriental feel

## SILK TOUCH

**Top middle** James Hare's Orissa Silk in Silver Birch is made from 100 per cent silk and costs £33 per m. There's also a paper-backing service, which starts from £27.90 per m

## DOT TO DOT

**Top right** Mix it up with striped bed linen and spotty wallpaper. Vanessa Arbuthnott's Pretty Maids Dove design is priced at £52 per roll. The buttoned headboard is covered with Plain Linen Charcoal fabric at £42 per m

Creating mood and focus within a bedroom can easily be achieved with your choice of wallpaper. From soothing scenes and painterly styles to tactile textures and natural effects such as brick, wood and tile, there's now something to suit every style and taste in interiors. 'We have seen a move away from stark, contemporary design in favour of heritage-inspired styles,' explains Michael Constable, Managing Director and Company Director of JAB Anstoetz UK. 'Reminiscent of the grandeur and opulence of time gone by, period print wallpapers have been reinterpreted with a contemporary twist, such as classic designs in dramatic shades. We're also seeing a move towards using two papers together – a trend that takes inspiration from period properties where different patterns were used above and below dado rails. Updated, this trend has a fresher look and is all about using different designs on opposing walls or open-plan schemes. Patterns can vary but colours should be kept complementary for a cohesive look.'

Heritage prints and traditional designs from a bygone age are also in vogue for fabrics and wallpaper company Zoffany, as Peter Gomez, Head of Design, confirms, 'The Jaipur collection was inspired by Indian Mughal painting which is a beautiful way of telling stories. Both our Pulu and Jaipur collections are narrative wallpapers that feature whimsical, interesting designs that urge the viewer to look closer. Scenic wallpapers are currently enjoying a revival and can look fantastic all over the home.'

One of the biggest trends of late is for ombré effects, which can be seen in designs by Barneby Gates and Lewis & Wood, amongst others. 'The Doves wallpaper by muralist Flora Roberts is a perfect example of a wallpaper that gives a painterly effect with the appearance of almost being painted directly onto the wall,' says Stephen Lewis, Managing Director of Lewis & Wood. 'It has an old fashioned look to it and the pastel colourways make it an ideal choice for a restful bedroom.'

Harlequin predicts a shift towards subtle textures and luxurious finishes for 2015. Claire Vallis, Design Director, explains: 'The trend is for understated opulence in the most relaxing room in the house to aid rest and relaxation but also to make the bedroom a sanctuary – a special haven away from the hubbub of daily routines.'

Stephen Lewis adds that your first consideration when choosing wallpaper for the bedroom has to be whether you want to wake up to it every morning. 'Wide width wallpapers, which feature large designs in bright colours, deliver a very beautiful way to decorate. We often hear from customers who say how much they continue to enjoy looking at our papers – that really is the true test.' **EKBB**





## NATURE'S WAY

**Above** This traditional Doves design has been created by Flora Roberts, a decorative muralist whose painting has a lyrical, peaceful quality. As part of Lewis & Wood's Wide Width wallpaper collection, it's £56.40 per m

**Below** Add depth and drama to your bedroom with the new and detailed Chivasso Monsoon collection by Dutch fabrics house JAB Anstoetz. Shown here in Mirage CH9116/050, it costs £110 per roll



## EASY ON THE EYE

### HAVE FUN WITH PLAYFUL PATTERNS AND PRINTS

- When it comes to using pattern, there are a few key design tricks to making it work well. Get it right, and you can create the ultimate restful bedroom retreat.
- You can make a small room look and feel much bigger if you go for large-scale prints. Conversely, a spacious bedroom can take smaller, intricate designs.
- If the room gets plenty of natural light, you can take your pick in terms of colour but if it's north facing and doesn't get a lot of sunlight, try to stick with more neutral and muted tones.
- The latest trends include archive prints, feature scenes, ombré designs that have the appearance of paint; tile, brick and wood 'trompe l'oeil' effects, as well as tactile styles in smooth silk.
- Another emerging trend is for natural, lifelike papers, especially with exotic nature scenes featuring delicate wildlife and floral repeats.
- In a child's bedroom you can go for a more playful scheme with iconic characters, cartoon shapes or colourful geometric prints. If the look is too busy for an all-round scheme, use it on just one wall to create a feature area.





## PASSAGE TO INDIA

**Left** Zoffany's latest collection includes Jaipur prints, embroideries, wallpapers and weaves inspired by Indian Mughal paintings. This Jaipur 311722 design costs £68 per roll to create a highly distinctive, elegant interior finish

## EASY APPLICATION

**Right** Make life simpler by opting for a 'paste the wall' design. Tress in Grey is a digitally printed geometric wallpaper by Sian Elin, which costs £90 per roll

## SHINE ON

**Below left** Harlequin's Asuka 110904 wallpaper, priced at £59 per roll, has an iridescent quality that helps reflect light around the room, which is perfect for smaller spaces

## POLO PRINT

**Below right** Pulu 311719 is a small-scale wallpaper from Zoffany that depicts Persian polo players and is available in three colourways - Indigo/Red, Aubergine/Rust and Charcoal Parchment. It's priced at £58 per roll







**VANESSA BARNEBY**  
CO-OWNER AND  
CREATIVE DIRECTOR,  
BARNEBY GATES

**What are the latest trends in wallpaper design?**

The natural world – flora and fauna – has been huge recently, particularly butterflies and birds, but also geometric tile-like prints. Colourwise, there's a big trend for dark backgrounds – charcoal, aubergine, blackberry – and then of course the ombré effect. Whether it's dip-dyed, graded shades or distressed like our Fresco Birds, the painterly look is everywhere.

**How is the ombré effect achieved and what look can it create?**

While it may appear to be digitally printed because of the photographic quality of the beaten up old painted wall, our Fresco Birds wallpaper has in fact been roller printed using the traditional gravure technique, where very fine levels of detail can be achieved. As with all our designs, Fresco Birds was hand-drawn in the first instance, before being painted and distressed and then engraved on to a number of copper rollers. I think this style of wallpaper can

have a very calming effect because of the feeling of organic layers built up and worn out over a period of time – it has a feeling of history.

**Are there any special considerations when choosing wallpaper for the bedroom?**

For me, bedroom wallpaper has to be calming. In a living area you can afford to be bold but the bedroom must be a place of peace and rest and this should be reflected in the wallpaper. Soft colours, floral or bird prints or distressed paint are all ideas that work for me.

**What's set to be big for 2015?**

In general, I have a feeling things will lean towards a more fun, tropical style, with some bright colour combinations and/or gilt finishes (there might be some hints there for our Spring 2015 collection!). Specifically for bedrooms, I think gold and silver might be big. Metallic prints can be lovely. When the light is right, metallic wallpaper in a bedroom can be completely magical.

Q&A

**FLIGHT OF FANCY**

**This page** Ombré effect wallpapers have the appearance of paint without the mess and hassle to go with it. This Fresco Birds design from Barneby Gates comes in a Natural colourway and costs £78 per roll

**INDUSTRIAL CHIC**

**1** Durable, wipeable and eco-friendly, Luma's Concrete 6 FSC certified wallpaper has the soft, subdued look and feel of concrete. It's £199 per roll

**STREET STYLE**

**2** Inspired by the aged tin ceilings of New York, this realistic Brooklyn Tin 4 wallpaper design comes in eight colourways and costs £219 per roll

**WOOD PANELLING**

**3** Andrew Martin's Jacobean wallpaper is part of the Attic collection and is ideal for creating a vintage wood panelled effect. In five colours, it costs £69.90 per roll

**TIMBER TREATMENT**

**4** For a vintage look, Rockett St George's Scrapwood wallpaper, priced £199 per roll, comes in eight wood options for a rustic, beach hut, loft living or contemporary feel





*‘The latest trends include archive prints, feature scenes, ombré designs and paint and tile, brick and wood ‘trompe l’oeil’ effects’*







# Restored CHARM

*Achieve a comforting winter bedroom with a reclaimed timber bed frame and sumptuously soft textiles. Combine metallic accents and a cool, grey colour palette for a Nordic-inspired scheme*

COMPILED BY KIRSTEN JONES

**1** Papel paper decorations, from £14.95 for a set of four, Nkuku **2** Purnori cashmere blanket, £469, Urbanara **3** Emmerson reclaimed pine bed, from £999, West Elm **4** Elegant metal table lamp, £120, Cox & Cox **5** Brass box lantern, from £25, Nordic House **6** Duetto cushion by Sonia Rykiel Maison, £71.40, Amara **7** The Bottle brown lamp, £110, House Doctor **8** Kelbrook reclaimed timber table, £495, Ian Mankin **9** Flamant Zephan side table, £357, Occa-Home **10** Cabled cashmere throw blankets, £560 each, Ralph Lauren

FOR STOCKISTS, SEE PAGE 122



**BED LINEN**

Lexington Poplin bedding with embroidery, from £40; Lexington quilted linen bedspread, £349; Lexington flag sham, £49; White knitted throw, £199, all Lexington Company from John Lewis





## ON THE SIDE

This contemporary cabinet is perfect for storing books and bedtime accessories. It's formed of oak, coated metal and leather and is also available in grey and blue. They're £389 each from Holly's House





# By your side

*Add character with one of these modern bedside tables*

COMPILED BY KIRSTEN JONES



1



2



3



4



5



6



7



8



9

**1** Cicognino black stained side table, £798, Cassina **2** AEKI reloaded solid oak stool by Auerberg, £172, Clippings.com **3** Gern side table in nickel-plated aluminium, £765, Tom Dixon **4** Companions bedside table by Studioilse in white oil finish, from £1,182, De La Espada **5** Bell side table with turned brass and black glass top, around £1,500, ClassiCon **6** Nordic bedside cabinet in ash, walnut, cherry and maple, £395, Heal's **7** Raw sidetable in solid birch wood by Jens Fager, £169, Muuto **8** Table-Chest in London Plane wood from the Röthlisberger Kollektion, from £1,857, Aram Stone **9** Flip around chair in light wood by Norm Architects, £125, Menu

FOR STOCKISTS, SEE PAGE 122



# Win

ONE OF 10 BREAKFAST SETS FROM  
DUALIT WORTH OVER £300 EACH!



**A**re you looking for new sleek appliances to complement your kitchen scheme, and make busy breakfasts go more smoothly? Look no further, because **ekbb** has teamed up with British manufacturer Dualit to give away over £3,000 worth of appliances! 10 readers will have the chance to win two amazing prizes – a Dualit Classic kettle and four-slice Classic toaster in the brand's Copper finish – worth more than £300 in total.

Invite metallics into your home interiors with the new Dualit Classic kettle. This appliance has a patented Whisper Boil™ function which means that your early morning tea or coffee won't disturb anyone else in the house – it is so quiet that it has been awarded the international Quiet Mark approval. Not only that, it has a super fast 3KW element for quick and efficient boiling, so you could get two cups of your hot drink in less than 90 seconds.

This Classic kettle is paired with the four-slice Classic toaster, now also available in the Copper finish. Hand-built in the UK and fully repairable, this model has patented ProHeat® Elements, which benefit from a protective mineral layer that covers the filaments, making them virtually unbreakable and easy to keep clean. On top of that it has a defrost and bagel function, concealed crumb tray for easy cleaning and timer to control the browning process, giving you the perfect toast every time. Visit the **ekbb** website now and enter to win this great kettle and toaster set!

For more information or to request a brochure, call  
01293 652500 or visit [dualit.com](http://dualit.com).

For your chance to win, answer the following question:

**WHAT PATENTED FUNCTION DOES  
THE DUALIT CLASSIC KETTLE HAVE?**

**A** Whisper Silent™ **B** Whisper Quiet™ **C** Whisper Boil™

TO ENTER VISIT [ekbbmagazine.co.uk](http://ekbbmagazine.co.uk)  
and click on the 'Competitions' option.

# Dualit®

**RULES OF ENTRY:** 1) Competition closes at midnight on 31st January 2015. Winners will be notified after the closing date. 2) Ten winners will receive one Copper Dualit Classic Kettle and one Copper Four-Slice Classic Toaster worth a total of £329.94. Mainland UK delivery is included. Installation is not included. Subject to availability, non transferable or refundable. 3) No cash alternative will be given. 4) Open to residents in the UK (mainland), over age of 18, except employees of Hubert Burda Media UK and Dualit. 5) Only one entry per person. 6) Winners must be willing to participate in publicity if required. 7) The Editor's decision is final. Correspondence will not be entered into. 8) Winners are selected at random, from correct entries received, after the competition end date. 9) Hubert Burda Media UK or Dualit may use your details to advise of products and services. Details are occasionally available to vetted companies. 10) Allow 8-10 weeks from selection to completion. 11) Reproduction of this competition, in whole or part, without written permission is prohibited. Hubert Burda Media UK reserves the right to prosecute offending parties.



# Subscribe now for only £8.50\*

**JANUARY OFFER** TREAT YOURSELF TO THREE ISSUES AT THIS SPECIAL PRICE



*By becoming a subscriber, you'll be the first to see our selection of inspirational ideas for your kitchen, bathroom and bedroom*



Download the new mobile edition of **ekbb** on your iPad, iPhone, Android device, PC or Kobo eReader!



TO SUBSCRIBE, VISIT ***essentialsubscriptions.co.uk*** CALL 01778 392471  
OR EMAIL US AT ***subscriptions@warnersgroup.co.uk***

\*For a postal subscription: Direct Debit for only £8.50 including delivery for three issues (Special January offer for UK only). Your subscription will automatically renew every quarter. You can cancel a Direct Debit at any time simply by contacting your bank or building society. Written confirmation may be required. Please also notify us via email at [subscriptions@warnersgroup.co.uk](mailto:subscriptions@warnersgroup.co.uk). Other costs are as follows: **Europe** (airmail) £95 **USA** £120 **Rest of world** (airmail) £145.  
\*\*Choose from the following payments for an app subscription: 3 back issue bundle for £7.99 or 1 issue for £2.99. 3 month recurring subscription for £7.99. 6 month recurring subscription for £16.99.



# Stockists

Contact details for the products, shops and designers in this issue



17

**A** AGA 0845 712 5207  
agaliving.com  
ALCANTARA EVANS ARCHITECTS  
020 7471 8553  
alcantaraevansarchitects.co.uk  
ALEXANDER & PEARL  
020 8508 0411  
alexanderandpearl.co.uk  
ALNO 01924 487900  
alnokitchens.co.uk  
AMARA 0800 587 7645  
amara.com  
ANDREW HEWISH  
andrewhewish.com  
ANDREW MARTIN 020 7225 5100  
andrewmartin.co.uk  
ANTHROPOLOGIE 020 7529 9800  
anthropologie.com  
ARAM STORE 020 7557 7557  
aram.co.uk

**B** BARNEBY GATES 07713 483530  
barnebygates.com  
BERT & MAY 020 3673 4264  
bertandmay.com  
BIBLIOTHEQUE 020 8365 2084  
bibliothèque.co.uk  
BISQUE 020 7328 2225  
bisque.co.uk  
BLOOMINGVILLE bloomingville.dk  
BODIE & FOU 020 8450 5600  
bodieandfou.com  
BRANDONI brandoni.com  
BROSTE COPENHAGEN  
0045 363 90 300  
brostecopenhagen.com  
BURLINGTON BATHROOMS  
0845 539 0055  
burlingtonbathrooms.com

**C** CAESARSTONE 01706 863600  
caesarstone.uk.com

CALLIGARIS 020 8977 3371  
calligarisinteriors.com  
CARRON 0808 129 2224  
carron.uk.net  
CASSINA 020 7014 5980  
cassina.com  
CHAMBER FURNITURE  
01959 532553  
chamberfurniture.co.uk  
CHAMPAGNE OCCASIONS  
07583 741364  
champagneoccasions.eu  
CHAPLINS 020 8421 1779  
chaplins.co.uk  
CLASSICON 0049 8974 81330  
classicon.com  
CLIPPINGS.COM 020 7060 7422  
clippings.com  
CLOUDBERRY LIVING  
07780 693034  
cloudberryliving.co.uk  
COCHRANE DESIGN  
020 7062 1064  
cochranedesign.com  
COX & COX 0844 858 0734  
coxandcox.co.uk  
CREATIVE MARY  
351 964 196 298  
creativemary.com  
CROWN PAINTS  
crownpaint.co.uk

**D** DAVID MELLOR  
01433 650220  
davidmellordesign.com  
DE LA ESPADA delaespada.com  
DE PLANTAGE AMSTERDAM  
caferestaurantplantage.nl  
DECORATOR'S NOTEBOOK  
0845 474 1747  
decoratorsnotebook.co.uk  
DEDAR dedar.com

DESIGNER BATHROOM CONCEPTS  
0845 873 4055  
designerbathroomconcepts.com  
DOGS TRUST 0207 837 0006  
dogstrust.org.uk  
DORNBRACHT 02476 717129  
dornbracht.com  
DRUMMONDS 01483 237202  
drummonds-uk.com  
DULUX 08444 817 817  
dulux.co.uk  
DURAVIT 0845 500 7787  
duravit.co.uk  
DYSON 0800 298 0298  
dyson.co.uk

**E** EBAY ebay.co.uk  
ECORA 020 7148 5265  
ecora.co.uk  
ECOS ORGANIC PAINTS  
01524 852371 ecospaints.com  
EDWARD BULMER 01544 388535  
edwardbulmer.co.uk  
ELECTROLUX 0844 561 3613  
electrolux.co.uk  
ELEMENT 7 020 7736 2366  
element7.co.uk  
EVONI DESIGN 01344 751 388  
evonidesign.com

**F** FALPER 07770 761656  
falper.it  
FARROW & BALL 01202 876141  
farrow-ball.com  
FENELLA SMITH 01491 638850  
fenellasmith.com  
FERM LIVING 0045 7022 7523  
ferm-living.com  
FINELINE 0808 256 8686  
fineline-windows.co.uk  
FIRED EARTH 0845 366 0400  
firedearth.com  
FRENCH CONNECTION  
0844 557 3285  
frenchconnection.com  
FUTUREHOME 0118 932 0828  
futurehome.co.uk

**G** GIQ DESIGN 0203 589 3389  
giqdesign.com  
GORENJE 020 8247 3980  
gorenje.co.uk  
GRAHAM & BROWN  
0800 328 8452  
grahambrown.com  
GRAUX & BAEYENS ARCHITECTS  
0032 9330 3493  
graux-baeyens.be

**H** H&M 0844 736 9000  
hm.com  
HABITAT 0844 499 1111  
habitat.co.uk  
HAIER 0333 003 8122  
haier.com  
HALCYON INTERIORS  
020 7486 3080  
halcyoninteriors.com  
HANS GROHE 01372 465655  
hansgrohe.co.uk  
HARRIMAN & CO 0116 251 2942  
harrimanandco.com  
HARLEQUIN 0845 123 6805  
harlequin.uk.com

HEAL'S 0870 024 0780  
heals.co.uk  
HEATH CERAMICS  
heathceramics.com  
HEM hem.com  
HIND RABII 0032 087 22 93 74  
hindrabii.com  
HOLLOWAYS OF LUDLOW  
020 7602 5757  
hollowaysofludlow.com  
HOLLY'S HOUSE 020 7736 2222  
hollys-house.com  
HOLLY HUNT hollyhunt.com  
HOUSE DOCTOR 0045 97 25 27 14  
en.housedoctor.dk  
HUDSON REED 01282 436934  
hudsonreed.co.uk

**I** IAN MANKIN 020 7722 0997  
ianmankin.co.uk  
ICONIC RADIATORS 01342 302 250  
iconicradiators.co.uk

**J** JAB ANSTOETZ jab-uk.co.uk  
JAMES HARE 0113 243 1204  
james-hare.com  
JIM LAWRENCE 01473 826685  
jim-lawrence.co.uk  
JOHN LEWIS 0845 604 9049  
johnlewis.com  
JONATHAN ADLER 0800 014 8166  
jonathanadler.com  
JONATHAN CHARLES FURNITURE  
020 7351 1922  
jonathancharlesfurniture.com  
JUNCKERS 01376 534 700  
junckers.co.uk

**K** KALDEWEI 0800 840 9770  
kaldewei.com  
KELLY HOPPEN 020 7471 3350  
kellyhoppenretail.com  
KOHLER 0844 571 0048  
kohler.co.uk  
KRISTINA DAM 0045 2573 6392  
kristinadam.dk

**L** LASVIT 020 7490 2004  
lasvit.com

LEFROY BROOKS  
lefroybrooks.co.uk  
LEWIS & WOOD 01453 878517  
lewisandwood.co.uk  
LEXINGTON 0046 854 55 58 00  
lexingtoncompany.com  
LITTLE GREENE 0845 880 5855  
littlegreene.com  
LOAF 0845 459 9937 loaf.com  
LSA 01932 789721  
lsa-international.co.uk  
LUMA 020 8748 2264  
lumadirect.com

**M** MADE.COM 0845 557 6888  
made.com  
MADE IN DESIGN 020 7692 4001  
madeindesign.co.uk  
MAJESTIC SHOWERS  
0844 800 1500  
majesticshowers.com  
MANDARIN STONE 01600 715444  
mandarinstone.com  
MARKS & SPENCER 0845 302 1234  
marksandspencer.com  
MENU 0045 4840 6100  
menu.as  
MIELE 0845 365 6603  
miele.co.uk  
MINT 020 7225 2228  
mintshop.co.uk  
MODULEO 01332 851500  
moduleo.co.uk  
MOWLEM&CO 020 7610 6626  
mowlemandco.co.uk  
MUUTO muuto.com

**N** NEPTUNE 01793 427427  
neptune.com  
NEST 01142 433000  
nest.co.uk  
NKUKU 01803 866847  
nkuku.com  
NOLTE 01707 290444  
nolte-kitchens.com  
NOM LIVING 020 7515 4422  
nomliving.com  
NORDIC HOUSE 0845 475 1610  
nordichouse.co.uk

118





# Contacts

*The fastest way to find your dream kitchen, bathroom and bedroom!*

NORTHERN ICON 020 8144 1925  
northernicon.com

**O**CCA-HOME 0844 879 4258  
occa-home.co.uk  
ONE DEKO 020 7375 3289  
onedeko.co.uk  
ORIGINAL BTC 020 8969 3561  
originalbtc.com  
OUT & OUT ORIGINAL 0344 417 1419  
outandoutoriginal.com  
OUT THERE INTERIORS  
020 8033 7443  
outthereinteriors.com

**P**PHILIPS 0844 338 0489  
philips.co.uk  
PIAZZA TILES 0845 257 0227  
piazzatiles.com  
PLANTATION RUG COMPANY  
plantationrug.co.uk  
POGGENPOHL 0800 298 1098  
poggenpohl.com  
PUMP STREET BAKERY  
01394 459829  
pumpstreetbakery.com  
PUUR FLOORS LONDON  
020 7084 6266 puur.co.uk

**Q**QUIRK quiirk.co.uk  
QUOOKER 020 7923 3355  
quooker.co.uk

**R**RALPH LAUREN HOME  
020 7535 4600  
ralphlaurenhome.com  
RIGBY & MAC 020 8761 1011  
rigbyandmac.com  
ROCA 01530 830080  
uk.roca.com  
ROCKETT ST. GEORGE 01444 253375  
rockettstgeorge.co.uk  
ROWEN & WREN 01932 847538  
rowenandwren.co.uk

**S**SAMSUNG 01932 454358  
samsung.com/uk  
SANDERSON 0844 543 9500  
sanderson-uk.com  
SCANOMAT scanomat.co.uk  
SECOND NATURE 01325 505539  
snccollection.co.uk  
SIAN ELIN 020 3287 0577  
sianelin.com  
SIEMENS 0844 892 9044  
siemens-home.co.uk  
SILESTONE 01256 761229  
silestone.co.uk  
SKANDIUM 020 7584 2066  
skandium.com  
SKANDIVIS 0845 226 3104  
skandivis.co.uk  
SMARTER wifikettle.com  
STAINGER GLASS 01293 513 127  
staingerglass.com  
STORY NORTH 07825 545 469  
storynorth.com  
SUB-ZERO 0845 250 0010  
subzero-wolf.co.uk

**T**TG STUDIO 020 7636 5659  
tg-studio.co.uk  
THE CONRAN SHOP 0844 848 4000  
conranshop.co.uk

THE MINT LIST 020 8616 9192  
themintlist.com  
THE MISTLEY KITCHEN  
01206 391 024  
mistleykitchen.com  
THE RADIATOR COMPANY  
01342 302250  
theradiatorcompany.co.uk  
THE WHITE COMPANY  
0844 736 4222  
thewhitecompany.com  
THE WORKTOP CENTRE  
0151 264 9000  
theworktopcentre.co.uk  
TINE K HOME 0045 45 66 01 02  
tinekhome.com  
TOM DIXON 020 7183 9737  
tomdixon.net  
TOM HOWLEY 01618 481200  
tomhowley.co.uk  
TWENTYTWENTYONE  
020 7288 1996  
twentytwentyone.com

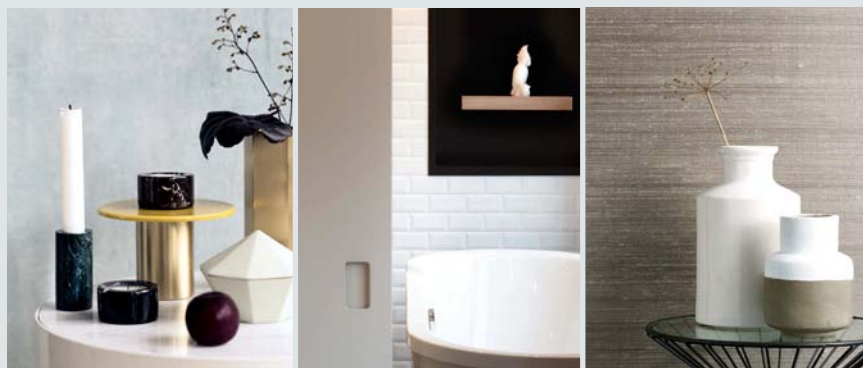
**U**MBRA SHIFT  
umbrashift.com  
URBANARA 0800 779 7527  
urbanara.co.uk

**V**VANESSA ARBUTHNOTT  
01285 831437  
vanessaarbuthnott.co.uk  
VILLEROY & BOCH 020 8871 4028  
villeroy-boch.com  
VIPP 00 45 45 88 88 15  
vippp.com/en  
VITAMIX 0900 5870 019  
vitamix.co.uk  
VOLA 01525 841155  
vola.com  
V4 WOOD FLOORING  
01276 488099  
v4woodflooring.co.uk

**W**WATERFORD 01782 204141  
waterford.co.uk  
WATERSTONES waterstones.com  
WATERWORKS 07974 430433  
waterworks.com  
WE ARE ELSEWHERE  
weareelsewhere.com  
WEST ELM 0800 404 9780  
westelm.co.uk  
WHIRLPOOL 0844 815 8989  
whirlpool.co.uk  
WILLIAM YEOWARD 020 7349 7828  
williamyeoward.com  
WOOD EMPIRE 020 7738 0808  
weinteriors.co.uk  
WOVENGROUND 020 7033 3741  
wovenground.com

**Y**YVES DELORME 020 7730 3435  
yvesdelorme.com

**Z**ZANOTTA zanotta.it  
ZARA HOME 020 7432 0040  
zarahome.com  
ZOFFANY 0844 543 4600  
zoffany.com  
ZUCCHETTI.KOS  
0039 0322 954700  
zucchettikos.com/en



FOR FURTHER INFORMATION ON  
EKBB ADVERTISERS SIMPLY CLICK ON...

*www.ekbbmagazine.co.uk/responses*

• ALNO	OUTSIDE BACK COVER
• BC DESIGNS	90
• CAESARSTONE	54
• CHALON	INSIDE BACK COVER
• CHAMBER FURNITURE	19
• CHARLES YORKE	4-5
• CHARNWOOD	56
• CLIVE CHRISTIAN	INSIDE FRONT COVER & 3
• CP HART	93
• DEKTON BY COSENTINO	14
• ESPRESSO DESIGN	39
• FISHER & PAYKEL	10
• HERITAGE BATHROOMS	13
• HURLINGHAM THE BATH COMPANY	88
• JOHN LEWIS	16
• MASTERCLASS KITCHENS	6-7
• MATKI	104-105
• NEPTUNE	29
• ROUNDHOUSE DESIGN	52
• SIEMATIC	50
• SUB ZERO & WOLF	21
• THE ENGLISH WARDROBE COMPANY	106
• TOM HOWLEY	8
• VITRA	98-99

## CLASSIFIED

- AMERICAN SHUTTERS
- BATHROOM CITY
- CROYDEX
- DEVOL KITCHENS
- FUNKTIONAL KITCHENS
- HICKS & HICKS
- JOHN LADBURY AND COMPANY
- MARLBOROUGH TILES
- OSMO
- PHILIP WATTS DESIGN
- QUERCUS BEDS
- RUGBY FITTED KITCHENS
- THE HUNTER FAN COMPANY
- THE SUSSEX RANGE
- VUPLEX UK LIMITED
- WARREN EVANS



## KITCHENS



### John Ladbury and Company

Unit 11 Alpha Business Park, Travellers Close,  
Welham Green, Hertfordshire AL9 7NT

Telephone: 01707 262966  
[www.johnladbury.co.uk](http://www.johnladbury.co.uk)



**funktional**kitchens



**Crouch End**  
128 Crouch Hill  
London N8 9DY  
Telephone 020 8341 2020

**Islington**  
42 Cross Street  
London N1 2BA  
Telephone 020 7359 4041

[www.funktionalkitchens.co.uk](http://www.funktionalkitchens.co.uk)



## KITCHENS

MARLBOROUGH  
MAKERS OF FINE ENGLISH TILES

up to 25% off selected tiles  
January SALE



GREAT QUALITY  
GREAT VALUE

**FREE** New  
108 page Wall Tile  
& 92 page Floor Tile  
brochures



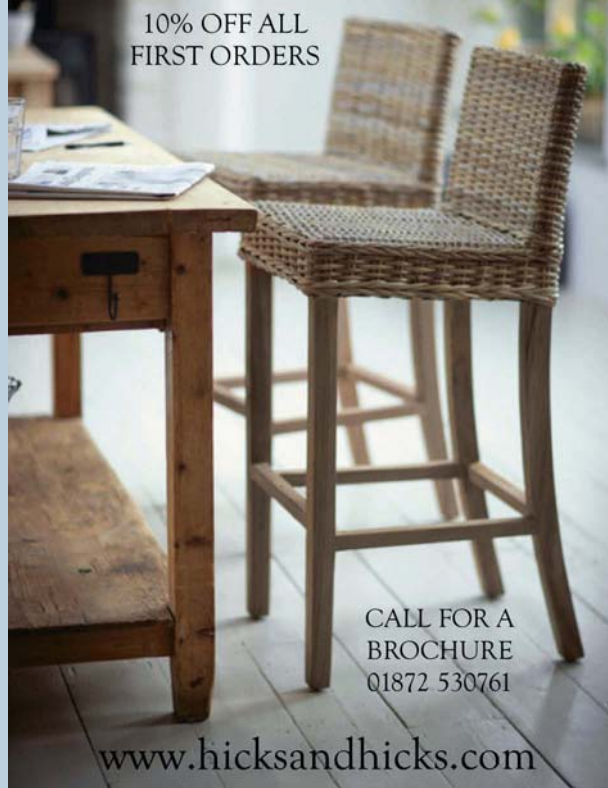
Call, visit our website or your  
local retailer to receive brochures  
**01672 515287/512422**

marlboughtiles.com

HICKS & HICKS

The online interiors store for homes of distinction

10% OFF ALL  
FIRST ORDERS



CALL FOR A  
BROCHURE  
01872 530761

www.hicksandhicks.com

deVOL Kitchens

www.devolkitchens.co.uk - 01509 261000



## BEDROOMS

Which? members  
rated us within the top 2  
mattress retailers  
(April 2014)

WINTER  
**sale**  
ends soon



'Slatted' £475  
double bed **£375**

THE SUNDAY TIMES WINNERS  
BEST GREEN COMPANIES 4 YEARS RUNNING

Warren Evans  
13 stores | online | 020 7693 8988

Don't forget to mention EKBB  
when replying to adverts

## HEATED TOWEL RAILS

The  
**sussex**  
Range

The original and finest 100% stainless steel towel rails & radiators  
Please call for a brochure and your nearest dealer



Tel. 01444 831200 Fax. 01444 831900 info@jlseurope.co.uk  
www.sussexrange.co.uk

quercus  
luxury handmade beds since 1983

Request your brochure  
& free sample.



quercusbeds.co.uk | 01777 869 669

To advertise in EKBB  
contact VICTORIA JENNINGS  
on 01206 851117



## BATHROOMS

**UK'S  
LARGEST  
FACTORY  
OUTLET**

# BATHROOM CITY

Est.1986

UK's Largest Factory Outlet

save up to  
**80%**

# THE BIG BATHROOM SALE

**OPEN  
7 DAYS  
a week**



**[www.bathroomcity.com](http://www.bathroomcity.com)**

Seeleys Road, Birmingham, B11 2LQ 0121 753 0700  
Amington Road, Birmingham, B25 8ET 0121 765 0800

Close to the NEC & Airport  
Interest Free Finance Available

## SHUTTERS

### AMERICAN SHUTTERS



20 years of experience  
**02392 597967**  
[sales@americanshutters.co.uk](mailto:sales@americanshutters.co.uk)



Whether you want to tap into the latest colour trends or create a bespoke print, our cast iron baths are hand finished, primed and ready for you to paint whatever colour you like.

To see all of our stunning products and create your perfect bathroom visit  
[www.heritagebathrooms.com/hb14](http://www.heritagebathrooms.com/hb14)

**HERITAGE**  
BATHROOMS

## CLEANING PRODUCTS

### MAINTAIN HIGH GLOSS HEAVEN



- Gives deep protected shine ✓
- Improves scratch resistance ✓
- Controls static ✓
- A devil against dirt and grease ✓
- Simple and easy to use ✓
- Many applications around the home ✓
- Safe on food surfaces ✓
- Contains natural ingredients ✓

[www.vuplex.co](http://www.vuplex.co)

Available from: VuPlex UK Limited  
Enquiries at [vuplex.co](http://vuplex.co)

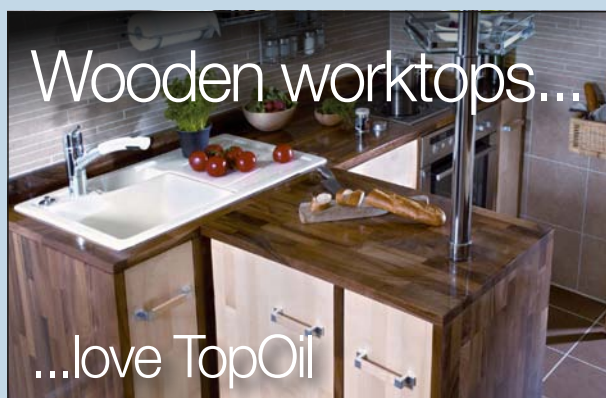
To advertise in EKBB contact VICTORIA JENNINGS on 01206 851117



## IRONMONGERY

mercury bar stool  
by philip watts  
[www.philipwattsdesign.com](http://www.philipwattsdesign.com)

## WOOD FINISHES



The Ultimate protection  
for your wooden worktop

- > Resistant to common stains:  
wine; beer; drinks and fruit juice.
- > Will not crack, peel or blister.
- > Highest coverage of any oil  
on the market.



Call or visit  
the web for  
stockists.

+44 (0)1296 481 220  
[www.osmouk.com](http://www.osmouk.com)



osmo

## KITCHENS



\* Nobilia on display at the Warwick Showroom

RFK The Independent Award Winning Kitchen Company

RFK Warwick, 47 Coten End,  
Warwick, CV34 4NT  
Tel: 01926 419165

RFK Rugby, Cottage Leap,  
Rugby, CV21 3XP  
Tel: 01788 547647

[www.rfkkitchens.co.uk](http://www.rfkkitchens.co.uk)

## BATHROOMS

**Cross over  
to Flexi-Fix**

**simply screw or glue**

**Re Fix**  
aligns to old holes

**Screw Fix**  
to new holes

**Glue Fix**  
to most surfaces

12 Fully co-ordinated ranges of bathroom accessories

+44 (0)1264 365881 | [info@croydex.co.uk](mailto:info@croydex.co.uk) | [www.croydex.com](http://www.croydex.com)

## WASTE DISPOSAL

Jan Offer £145

**Waste Disposal Units**

- ✓ Gets rid of waste food fast
- ✓ Saves space, time and money
- ✓ Great performance, great value

Call now to order: 01256 636 509

[www.waste-force.com](http://www.waste-force.com)

For further information on EKBB advertisers, and to request a brochure, simply click on [www.ekbb.co.uk/responses](http://www.ekbb.co.uk/responses)



# The Essential Directory

Sponsored by



## MATRIX KITCHENS KNIGHTSBRIDGE

10 Thurloe Place  
Knightsbridge  
London,  
SW7 2RZ

Tel: 020 7808 0340  
design@matrixkitchens.co.uk  
www.matrixkitchens.co.uk

## ESSENTIAL APPLIANCES

### BLANCO GERMANY

Sinks, Taps, Cooker  
Hoods & Accessories

1 Victor Way  
Colney Street  
St. Albans  
AL2 2FL

Tel: 0844 912 0100  
www.blanco.co.uk



### caple

www.caple.co.uk

0117 938 1900  
sales@caple.co.uk



Amica

ZEN

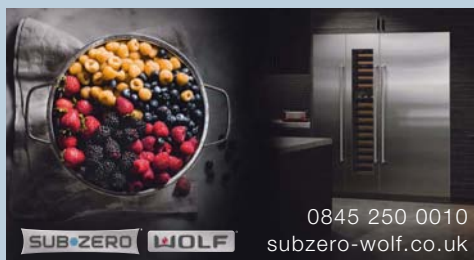
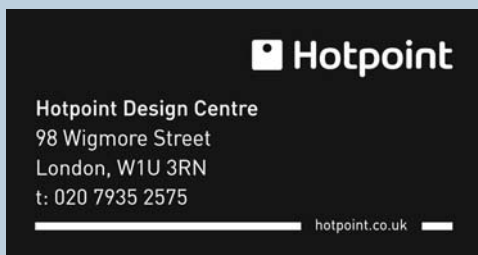
No timers, no alarms  
just cooking genius  
- quietly.

www.amica-international.co.uk

### Hotpoint

Hotpoint Design Centre  
98 Wigmore Street  
London, W1U 3RN  
t: 020 7935 2575

hotpoint.co.uk



SUB-ZERO WOLF

0845 250 0010  
subzero-wolf.co.uk

## ESSENTIAL SINKS & TAPS

### THE UNDERMOUNT SINK SPECIALISTS

See our full range at  
www.the1810company.co.uk

Unit 7, Bromfield Commercial Park,  
Mold, Flintshire CH7 1HE  
t. +44 (0) 1978 660 770 f. +44 (0) 1978 660 771  
e. sales@the1810company.co.uk

1810  
THE 1810 COMPANY



Tel: 0161 436 6280  
www.franke.co.uk

FRANKE

### V-ZUG

Premium Quality Kitchen  
Appliances from Switzerland

www.vzug.co.uk

0843 289 5759 • info.uk@vzug.com



Premium  
Swiss  
Quality



Wine Storage  
Corner Fridges  
Drawer Fridges  
Cold Rooms

norcool  
cold by nature

www.norcool.co.uk

### LIEBHERR

Refrigeration Experts

COOELECTRIC LTD

National Salesline 08444 122 655  
National Free Fax 0800 197 6591  
Email sales@cooelectric.co.uk  
Website www.myliebherr.co.uk



See more of  
our stunning  
kitchens at  
tec-kitchens.com

01621 850115  
info@tec-kitchens.com

tec-kitchens

Kitchens & Bathrooms to inspire you

Call 0161 436 6280 or visit www.carron.com



Inspiration for your kitchen



CARRON  
PHOENIX

### GAGGENAU

Gaggenau Showroom  
40 Wigmore Street,  
London W1U 2RX

Consumer enquiries: 0844 892 8988

Dealer enquiries: 0844 892 8929

Website: www.gaggenau.co.uk



THE NEW SINK & TAP COLLECTION FROM  
BRITAIN'S NO. 1 SINK MANUFACTURER.

RANGEMASTER  
sinks & taps

www.rangemastersinks.co.uk

Tel: 0870 789 6110



KWC

www.kwctaps.co.uk

KWC  
FAUCETS



# TO PROMOTE YOUR COMPANY IN THIS SECTION CALL VICTORIA JENNINGS ON 01206 851117 ext 222

## ESSENTIAL BEDROOMS



**Loddenkemper**  
Email: sales@euromobel.co.uk  
T: 0845 658 1949 www.loddenkemper.de

## ESSENTIAL KITCHENS

**Black RoK®** KITCHEN DESIGN  
Made in Germany

Showroom  
162 High St  
Uckfield  
East Sussex  
TN22 1AT  
01825 766 976  
www.blackrokdesign.com



## ESSENTIAL KITCHENS

**MATRIX KITCHENS**  
KNIGHTSBRIDGE

10 Thurlow Place,  
Knightsbridge,  
London SW7 2BZ  
Tel: 020 7808 0340  
design@matrixkitchens.co.uk  
www.matrixkitchens.co.uk



## ESSENTIAL WORKTOPS

**DECO GLAZE**  
Suppliers of the ultimate 10mm worktop

www.decoglaze.co.uk



www.unitsonline.co.uk

units online



**FULL PROJECT MANAGEMENT & DESIGN SERVICE FOR**  
PROPERTY DEVELOPERS | SELF BUILD PROJECTS |  
ARCHITECTS | COMMERCIAL ENTERPRISES | HOMEOWNERS

*Lisa Melvin*  
DESIGN

01788 866996 | WWW.LISAMELVINDESIGN.CO.UK

f t e p YouTube

**BUSHBOARD**

Sensational surfaces for kitchens  
To find out more go to www.bushboard.co.uk,  
email help@bushboard.co.uk or call us on 01933 232 272



Sophisticated simplicity

**poggen pohl**

+SEGMENTO  
Poggenpohl UK, 100 London Road, St Albans, Herts: AL1 1RX  
Tel: +44(0) 1727 730100



**Natural Bed Company**  
www.naturalbedcompany.co.uk

Call us on: 0114 272 1984



pietra solid surface worktops  
It's all in the detail

**DERALAM**

Deralam Laminates Ltd, West  
Coast Park, Bradley Lane,  
Standish, Wigan, WN6 0YR  
National Sales Line: 01257 478540  
Fax: 01257 478550  
Email: sales@deralam.co.uk  
www.deralam.co.uk



**BA part of it**  
The choice you make, made better

Cookstown +44 (0) 28 8676 4600  
Doncaster +44 (0) 1302 890555  
mail@bacomponents.co.uk  
www.byba.co.uk

By **BA**



The search for  
the perfect range  
cooker is over

**britannia**  
Your life. Our passion

Contact us today on 0843 507 3431  
www.britanniainliving.co.uk



**TOP QUALITY STAINLESS STEEL**

Worktops Splashbacks Panels Doors

Tel 01442 82 6999  
www.gecanderson.co.uk

**GEC ANDERSON**  
the stainless steel specialists



**RFK KITCHENS**

- KITCHENS
- APPLIANCES
- WORKSURFACES
- INNOVATIONS

Call: 01788 547647  
Unit 7, Cottage Leap, Rugby CV21 3XP  
5 mins off junction 1 M6 & junction 19 of the M1

www.rfkkitchens.co.uk



**Terence Ball Kitchens**  
A name you can trust

- High Quality Cabinets (All Egger Finishes)
- Bespoke Manufacturing
- Over 250 Door Ranges
- Unbeatable Industry Advice & Service
- Deliveries Throughout the UK

www.terenceballkitchens.co.uk  
sales@terenceballkitchens.co.uk  
01984 624640



## ESSENTIAL SPLASHBACKS

**UK SPLASHBACKS**

Tailor made & fully fitted  
toughened glass  
splashbacks in any size,  
shape & colour

Tel: 0800 232 1149  
www.uksplashbacks.com



Beautiful British Furniture,  
Designed with Care,  
Fitted by Craftsmen.

Covering  
Buckinghamshire

0844 579 6075

**Domus**  
Kitchens and bedrooms

www.domuskitchensandbedrooms.co.uk



**SCHMIDT KITCHENS**

Schmidt Kitchens UK  
01622 812123  
www.schmidt-kitchens.com







# William YEOWARD

Known for his natural flair for entertaining, this London designer shares his tips on lighting, shopping and styling the perfect dinner party

INTERVIEW SUSAN SPRINGATE | PORTRAIT GAVIN KINGCOME

William Yeoward is an internationally renowned designer famed for his unique homeware which includes lighting, linens, tableware and crystal. His knowledge of entertaining has made him a renowned tastemaker and he has written several lifestyle books. Most recently he has created a collection of antique-inspired pieces for Jonathan Charles Fine Furniture. He has shops in New York and London and lives in the Cotswolds.

**Tell us about your home?** My house in the Cotswolds is an old school, lived in by my great aunt before me. Built of Bath stone, it dates from the mid-19th century. With a bell on the top to call the school children to their lessons, it had a dominating position in the village. At present I am rebuilding the Cotswold stone walls in the fields around us. To see craftsmen work like they have done for many years brings me such joy. I feel in an odd way that we are putting something back into the original, classical landscape.

**Describe your kitchen.** My kitchen has a 15ft ceiling and a triple Gothic window made of stone. There are huge black and white lino tiles on the floor and a serviceable scrubbed oak 19th century table. It does for everything, from making pastry to having a proper dinner party.

**Do you collect anything?** I collect old crystal, plates and vintage furniture. At the last count there were over a 1,000 pieces of tableware. These, of course, are inspirational in many ways but mostly fulfil my passion for using old pieces.

**What is your most treasured possession and why?** I would be sad to part with my 19th century oak-cased clock. It sits in the middle of the dresser and makes sure I'm either frightfully early or embarrassingly late, as it never tells the correct time.

**Where do you shop?** From junk markets in America to flea markets in Paris to right here in Tetbury in Gloucestershire.

**Any tips for lighting when you are entertaining?** Entertaining at weekends can be particularly varied, from picnics in the woods to a table for four in the garden room at the end of our lawn, but normally we have guests in the kitchen or dining room, using just candles as our lighting. I have arranged some recessed lights above the dining table that are so low that they give everybody a healthy glow when they are sitting and eating dinner.

**Any inspired table setting ideas?** However simple or smart my tables are, I aim to be relevant to the occasion. So if it's a kitchen supper, I pull out rustic pottery and mix it with ill-assorted Regency goblets and rough linen placemats. If on the other hand it's Christmas, I can be quite sure of pulling out the best William Yeoward crystal, Georgian silver and setting three dozen candlesticks ablaze.

**What makes the perfect dinner party?** Interesting people. After all, it's what every decent gathering is all about.

**Do you cook?** I cook furiously at the weekends, experimenting on my unsuspecting guests with new and varied dishes that are my take on traditional English. My kitchen is laid out in a simple old-fashioned scullery style, an AGA on one wall, a dresser on another, sinks along a third and a large window seat on the fourth. The long oak rectangular dinner table set in the centre is the finishing touch.

**Which kitchen aid couldn't you live without?** My housekeeper Carol. She peels and scrapes and tidies up and makes life a total joy and pleasure. *ekbb williamyeoward.com*



**Left** Blue and white china atop a linen covered table. Image from William Yeoward on Entertaining by William Yeoward, published by CICO Books (£25). Photo by Paul Ryan®. **Above** Estrella Indigo cushion, £65; Inchara Indigo cushion, £85, both William Yeoward. **Right** Honeybee honey jar & spoon, £70, William Yeoward. **Far right** Photo by Gavin Kingcome



# AWARD WINNING HANDCRAFTED KITCHENS



EXCLUSIVELY DESIGNED BY CHALON



*"This is my dream kitchen. The whole process from start to finish was great fun, with the team at Chalon providing their expert advice on design and colour. It works brilliantly as a family kitchen right at the heart of our home, and is the perfect place for me to bake and to work – whether for entertaining, recipe development or baking classes."*

*Miranda Gore Browne*

MIRANDA GORE BROWNE

Author & Finalist on *The Great British Bake Off*

## CHALON

EST. 1978



[www.chalon.com](http://www.chalon.com) | +44 (0)800 160 1978



# ALNO



DESIGN

INNOVATION

QUALITY

New ALNOSTAR PURE with special touch super matt laminate, feeling silky-smooth and eliminating unpleasant fingerprints. Part of the new 2015 **ALNO** kitchen collection.

**Winter Sale starts 27<sup>th</sup> December. Limited Period Only.**  
Visit your nearest ALNO retailer or John Lewis store for more details.



ALNO kitchens are sold through John Lewis Department stores and selected Specialists nationwide.

Alton (Hampshire), Ayr, Balham (Greater London), Beaconsfield, Blackburn, Bristol, Bury St Edmunds, Chelmsford, Chiswick, Croydon (Greater London), Dorking, Eastbourne, Exeter, Findon (West Sussex), Harrogate, Horndean (Hampshire), Leeds, London W1, Manchester (Altrincham, Prestwich), Newcastle under Lyme, Newport, Northampton, Nottingham, Pinner, Reading, Sevenoaks, St Albans, Sutton Coldfield, Surbiton (Greater London), Ulverston (Cumbria), Wirral, York.

For a copy of our brochure simply go on-line or call: 08700 433742

[www.alnokitchens.co.uk](http://www.alnokitchens.co.uk)

40<sup>UK</sup>  
**ALNO**  
1974-2014

**if**  
product  
design  
award

interior  
innovation  
award  
2011  
Winner



reddot design award  
winner 2010